

USB-C® to HDMI™ & USB™ 3.0 / USB™ Type-A with Power Delivery

JCA379



JCA379EW
JCA379ER
JCA379EC

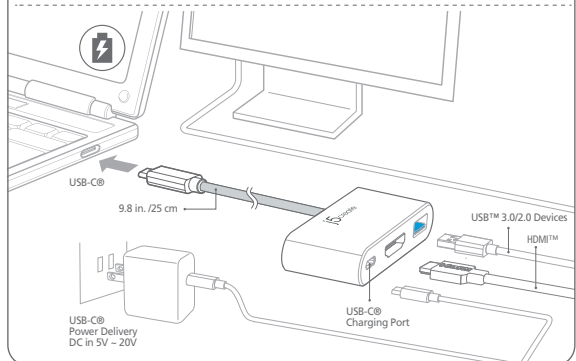
- EN : Quick Installation Guide
- DE : Kurzanleitung Für Installation
- FR : Guide D'installation Rapide
- IT : Guida rapida all'installazione
- NL : Beknopte installatiehandleiding
- ES : Guía De Instalación Rápida
- PT : Guia de instalação rápida
- SE : Snabbinstallationsguide
- DK: Startvejledning
- NO: Hurtiginstallasjonsveiledning
- FI: Pika-asennusopas
- HU: Gyors telepítési útmutató
- CZ: Rychlý Průvodce Instalací
- RU: Руководство по быстрой установке
- 日本語: クイックインストールガイド
- 繁体中文: 快速安裝手冊

English

- ### ■ Features
- HDMI™ port supports 3840 x 2160 @ 30 Hz
 - USB™ 3.0 port: 5 Gbps and backwards compatible with USB™ 2.0 and USB™ 1.1 devices
 - Supports upstream charging & power delivery 3.0 via USB-C® charging port

- ### ■ System Requirements
- Available USB-C® port (USB™ 3.1 Gen1 Type-C™ is recommended)
 - Available DisplayPort™ Alternate Mode over USB-C® connector
 - Perfect for MacBook and Chromebook
 - Available USB™ Power Delivery 3.0 over USB-C® to support upstream charging
 - DisplayPort™ v1.2 required on graphics card or video source to support 4K @ 30 Hz

- ### ■ Notes
- If you are using a high-powered USB™ device please attach the Type-C™ power adapter to the power delivery port to ensure maximum performance
 - To ensure files copy completely, do not remove the Type-C™ power adapter while copying files

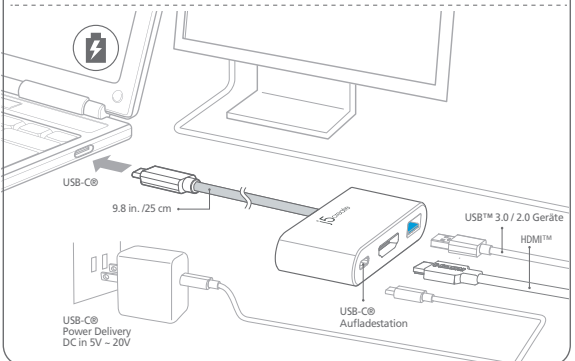


Deutsch

- ### ■ Eigenschaften
- HDMI™-Anschluss unterstützt 3840 x 2160 @ 30 Hz
 - USB™ 3.0-Port 5 Gbps rückwärts kompatibel mit USB™ 2.0 und USB™ 1.1-Geräte
 - Unterstützt Upstream-Lade & Leistungsabgabe 3.0 über USB-C® -Ladeanschluss

- ### ■ System Anforderungen
- Freier USB-C®-Anschluss (USB™ 3.1 Gen 1 Typ-C wird empfohlen)
 - Verfügbare Anzeigernalternativmodus über USB-C® -Stecker.
 - Perfekt für MacBook und Chromebook
 - Verfügbare USB™ Power Delivery 3.0 über USB-C® zur Unterstützung der Upstream-Aufladung
 - DisplayPort™ v1.2 erforderlich auf Grafikkarte oder Videoquelle zur Unterstützung von 4K @ 30 Hz

- ### ■ Notizen
- Wenn Sie einen High-Power-USB™-Gerät verwenden Sie bitte den Typ-C befestigen Stromadapter in den Anschluss Leistungsabgabe maximale Leistung zu gewährleisten.
 - Um sicherzustellen, Dateien zu kopieren vollständig, entfernen Sie nicht den Typ-C-Netzteil, während Kopieren von Dateien

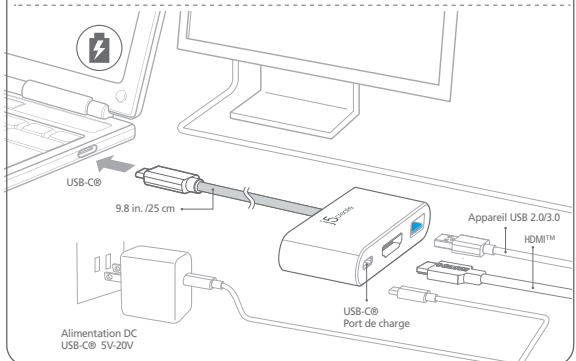


Français

- ### ■ Caractéristiques
- Port HDMI™ soutenant 3840 x 2160 @ 30 Hz
 - Port USB™ 3.0 rétrograde à 5Gbps avec les appareils USB™ 2.0 et 1.1
 - Soutient chargement et alimentation 3.0 à travers le port USB-C® de Chargement

- ### ■ Système Requis
- Port USB-C® disponible (USB™ 3.1 Gen1 Type-C est recommandé)
 - Mode d'affichage alternatif disponible à travers la connexion USB-C®
 - Parfait pour MacBook et Chromebook
 - Livraison d'alimentation 3.0 USB™ disponible sur USB-C® pour soutenir la charge en amont
 - DisplayPort™ v1.1a requis sur la carte graphique pour le soutien de résolution 4K @ 30 Hz

- ### ■ A Noter
- Si vous utilisez des appareils USB™ à haute consommation, veuillez brancher la prise Type C dans le port d'alimentation du pour assurer une performance maximale
 - Pour vous assurez du copiage complet de fichiers, ne dé-branchez pas la prise Type C pendant le copiage

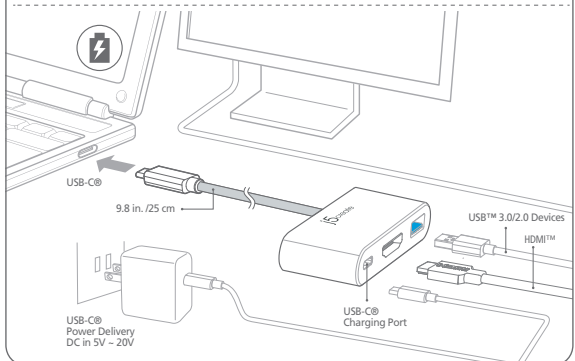


Italiano

- ### ■ Caratteristiche
- La porta HDMI™ supporta 3840 x 2160 a 30 Hz
 - Porta USB™ 3.0: 5 Gbps e retrocompatibile con dispositivi USB™ 2.0 e USB™ 1.1
 - Supporta carica e alimentazione upstream 3.0 tramite porta di carica USB-C®

- ### ■ Requisiti di sistema
- Porta USB-C® disponibile (USB™ 3.1 Gen1 Type-C™ consigliato)
 - Modalità DisplayPort™ Alt disponibile su connettore USB-C®
 - Perfetto per MacBook e Chromebook
 - USB™ Power Delivery 3.0 su USB-C® disponibile per il supporto della carica upstream
 - DisplayPort™ v1.2 necessario su scheda video o sorgente video per supportare 4K a 30 Hz

- ### ■ Nota
- Se si utilizza un dispositivo USB™ ad alta potenza, collegare l'adattatore di alimentazione Type-C™ alla porta di alimentazione per garantire prestazioni massime
 - Per garantire la copia completa dei file, non rimuovere l'adattatore di alimentazione Type-C™ durante la copia dei file



STOP!

If you have any problems with this product please contact our technical support team for assistance.

TECHNICAL SUPPORT

Customer Service: **888-988-0488**
 Technical Support: **888-689-4088**
 Email: service@j5create.com
 Service Hours: **Mon. - Fri. 10:00 - 18:00 E.S.T.**

SOPORTE TÉCNICO
 Número gratuito : +1-888-988-0488
 Horas de operación :
 Lun - Vier : 10:00 - 18:00 U.S.A.-E.S.T
 Correo electrónico : service@j5create.com

TECHNISCHER SUPPORT
 Kostenloser Anruf bei : +1-888-988-0488
 Sprechstunden :
 Mon.-Frei. 10:00 – 18:00 U.S.A.-E.S.T
 E-mail : service@j5create.com

SUPPORT TECHNIQUE
 Numéro gratuit : +1-888-988-0488
 Heures d'ouverture :
 lun.-Ven. 10:00 – 18:00 U.S.A.-E.S.T
 Email : service@j5create.com

TECHNICKÁ PODPORA
 Zákaznická linka : 888-988-0488
 Technická podpora : 888-689-4088
 Mon.-Frei. 10:00 – 18:00 U.S.A.-E.S.T
 E-mail : service@j5create.com

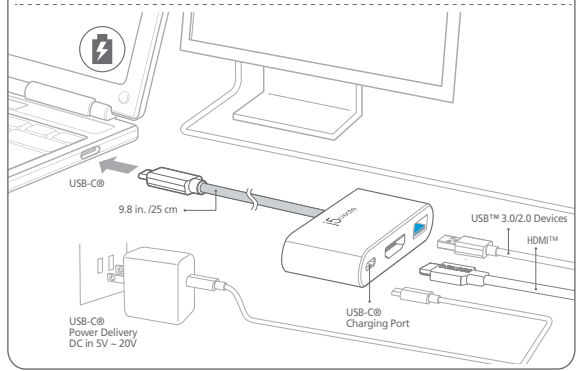
DisplayPort and DP are trademarks of Video Electronics Standards Association, its affiliates or its respective owners, registered or used in many jurisdictions worldwide. USB-C and USB are trademarks of USB Implementers Forum, Inc., its affiliates or its respective owners, registered or used in many jurisdictions worldwide. HDMI is a trademark of HDMI Licensing Administrator, Inc., its affiliates or its respective owners, registered or used in many jurisdictions worldwide. Other trademarks and trade names may be used in this document to refer to either the entities claiming the marks and/or names or their products and are the property of their respective owners. All company, product and service names used are for identification purposes only. Use of these names, logos, and brands does not imply endorsement. We disclaim any interest in the marks of others.

Dutch

- ### ■ Opties
- HDMI™-poort ondersteunt 3840 x 2160 bij 30 Hz
 - USB™ 3.0-poort: 5 Gbps en terugwaarts compatibel met USB™ 2.0- en USB™ 1.1-apparaten
 - Ondersteunt upstream laden en vermogensafgifte 3.0 via USB-C®-laadpoort

- ### ■ Systemvereisten
- Beschikbare USB-C®-poort (USB™ 3.1 Gen1 Type-C™ wordt aanbevolen)
 - Beschikbare DisplayPort™ Alt-modus via USB-C®-connector
 - Perfect voor MacBook en Chromebook
 - Beschikbare USB™ Power Delivery 3.0 via USB-C® ter ondersteuning van upstream laden
 - DisplayPort™ v1.2 vereist op grafische kaart of videobron ter ondersteuning van 4K bij 30 Hz

- ### ■ Opmerking
- Als u een USB™-apparaat met hoog vermogen gebruikt, bevestig dan de Type-C™-voedingsadapter aan de power delivery-poort voor maximale prestaties
 - Om er voor te zorgen dat bestanden volledig worden gekopieerd, moet u de Type-C™-voedingsadapter niet verwijderen tijdens het kopiëren van Zestanden

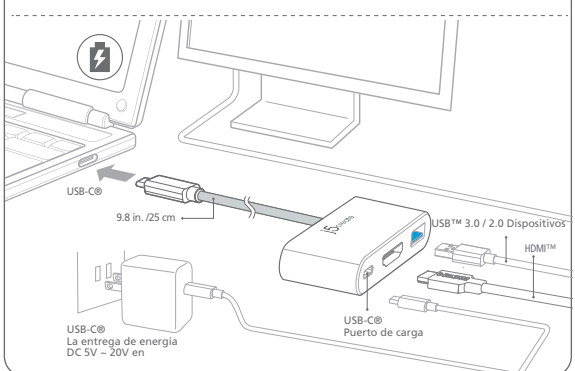


Español

- ### ■ Características
- Puerto HDMI™ soporta 3840 x 2160 @ 30 Hz
 - Puerto USB™ 3.0 5Gbps compatible con dispositivos USB™ 2.0 y USB™ 1.1
 - Soporta la carga de contracorriente y la entrega de potencia 3.0 via USB-C® puerto de carga

- ### ■ Requisitos del Sistema
- Tipo-C puerto USB™ disponible (se recomienda USB™ 3.1 Gen1 Tipo-C)
 - Modo de visualización alternativo disponible sobre el conector USB-C®
 - Perfecto para MacBook y Chromebook
 - USB disponible la entrega 3.0 de potencia a través de USB-C® para apoyar la carga de contracorriente
 - V1.1a DisplayPort™ requiere en la tarjeta de gráfica para apoyar 4K @ 30 Resolución

- ### ■ Notas
- Si está utilizando un dispositivo USB™ de alta potencia adjunte el Tipo-C adaptador de alimentación al puerto de entrega de potencia para garantizar el máximo rendimiento
 - Para asegurar los archivos de copia por completo, no retire el adaptador de alimentación de Tipo-C

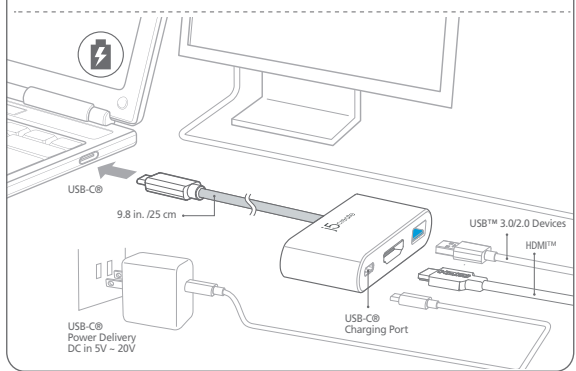


Portuguese

- ### ■ Características
- A porta HDMI™ suporta 3840 x 2160 a 30 Hz
 - Porta USB™ 3.0: 5 Gbps e retrocompatível com dispositivos USB™ 2.0 e USB™ 1.1
 - Suporta carregamento e fornecimento de alimentação 3.0 através de porta de carregamento USB Tipo C®

- ### ■ Requisitos do sistema
- Porta USB-C® disponível (USB™ 3.1 Gen1 Type-C™ recomendado)
 - Modo DisplayPort™ Alternativo disponível através de conector USB-C®
 - Perfeito para MacBook e Chromebook
 - USB™ Power Delivery 3.0 através de USB-C® disponível para suportar carregamento
 - DisplayPort™ v1.2 necessário na placa gráfica ou fonte de vídeo para suportar a resolução 4K a 30 Hz

- ### ■ Nota
- Se estiver a utilizar um dispositivo USB™ de alta potência, ligue o transformador Type-C™ à porta de fornecimento de energia do para garantir o máximo desempenho
 - Para garantir a cópia de todos os ficheiros, não remova o carregador Type-C™ durante o processo de cópia

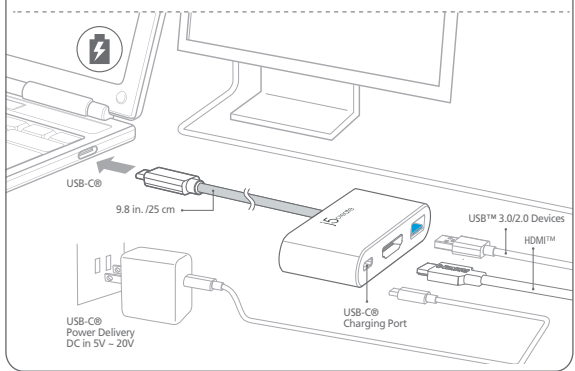


Swedish

- ### ■ Caractéristiques
- HDMI™-porten stöder 3840 x 2160 @ 30 Hz
 - USB™ 3.0-port: 5 Gbps och bakåtkompatibel med USB™ 2.0- och USB™ 1.1-enheter
 - Stöder uppströmsladdning och Power Delivery 3.0 via USB-C®-laddningsport

- ### ■ Systemkrav
- Tillgänglig USB-C®-port (USB™ 3.1 Gen1 Type-C™ rekommenderas)
 - Tillgänglig DisplayPort™ Alt Mode över USB-C®-kontakten
 - Perfekt för MacBook och Chromebook
 - Tillgänglig USB™ Power Delivery 3.0 över USB-C® för att stödja uppströmsladdning
 - DisplayPort™ v1.2 krävs på grafikkortet eller videokällan för att stödja 4K @ 30 Hz

- ### ■ Obs!
- Om du använder en USB™-enhet med hög effekt ska du ansluta Type-C™-strömadaptern till porten för att säkerställa maximal prestanda
 - För att säkerställa att filerna kopieras fullständigt får du inte ta bort Type-C™-strömadaptern under kopieringen.



Dansk

■ Funktioner

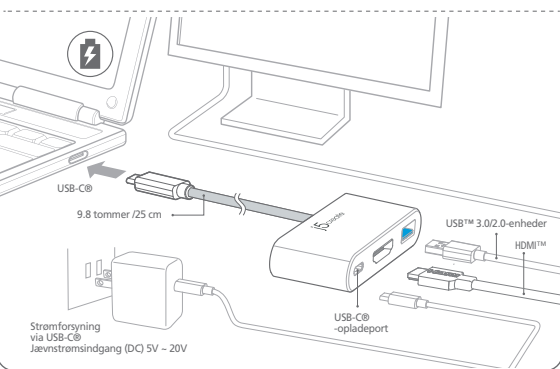
- HDMI™-port, der understøtter 3840 x 2160 med 30 Hz
- USB™ 3.0-port: 5 Gbps og bagudkompatibel med USB™ 2.0- og USB™ 1.1-enheder
- Understøtter upstream-opladning og strømforsyning 3.0 via USB-C®-opladningsporten

■ Systemkrav

- Tilgængelig USB-C®-port (USB™ 3.1 Gen1 Type-C™ anbefalet)
- Tilgængelig DisplayPort™ Alt-funktion via USB-C®-stik
- Perfekt til MacBook og Chromebook
- Tilgængelig USB™-strømforsyning (PD 3.0) via USB-C® til upstream-opladning
- DisplayPort™ v1.2 påkrævet på grafikort eller videokilder for brug af 4K med 30 Hz

■ Bemærkninger

- Hvis du bruger en USB™-enhed med høj effekt, skal du tilslutte Type-C-strømadapteren til strømforsyningsporten for, at sikre den bedste ydeevne
- For at sikre, at filerne kopieres helt, må du ikke fjerne Type-C™-strømadapteren under kopiering af filer



Norsk

■ Funksjoner

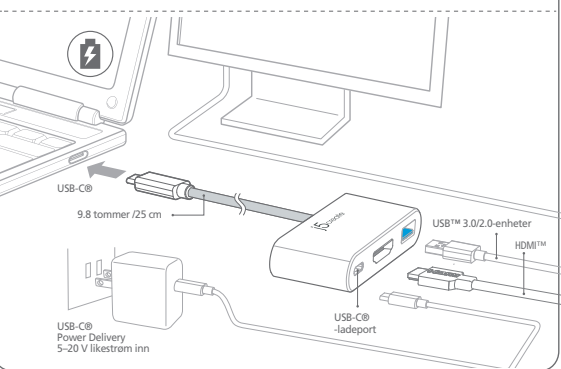
- HDMI™-port støtter 3840 x 2160 ved 30 Hz
- USB™ 3.0-port: 5 Gbps og bakoverkompatibel med USB™ 2.0- og USB™ 1.1-enheter
- Støtter oppstrømslading og Power Delivery 3.0 via USB-C®-ladeport

■ Systemkrav

- Tilgjengelig USB-C®-port (USB™ 3.1 gen. 1 Type-C™ anbefales)
- Tilgjengelig DisplayPort™ Alt-modus over USB-C®-kontakt
- Perfekt for MacBook og Chromebook
- Tilgjengelig USB™ Power Delivery 3.0 over USB-C® for å støtte oppstrømslading
- Grafikkortet eller videokilden må ha DisplayPort™ 1.2 for å støtte 4K ved 30 Hz

■ Merknader

- Hvis du bruker en USB™-enhet som trenger mye strøm, må du koble Type-C™-strømadapteren til Power Delivery-porten på for å sikre maksimal ytelse
- For å sikre at filene kopieres fullstendig må du ikke fjerne Type-C™-strømadapteren mens de kopieres



Suomi

■ Carácterísticas

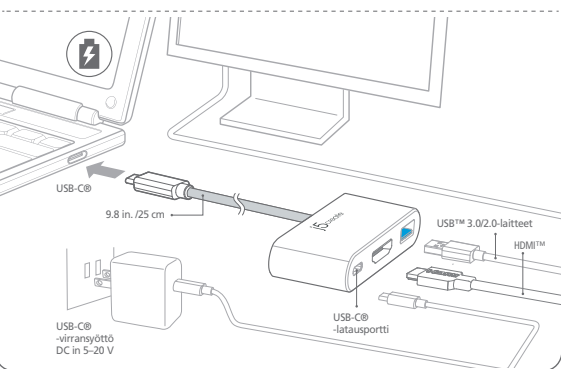
- HDMI™-portti tukee 3840 x 2160 @ 30 Hz -resoluutiota
- USB™ 3.0 -portti: 5 Gbps ja taaksepäin yhteensopiva USB™ 2.0 - ja USB™ 1.1 -laitteiden kanssa
- Tuki ylivirtalataamisella ja virransyöttö 3.0 USB-C®-latausportilla

■ Järjestelmävaatimukset

- Käytettävissä oleva USB-C®-portti (USB™ ® 3.1 Gen1 Type-C™ on suositeltava)
- Käytettävissä DisplayPort™ Alt -tila USB-C®-liitännällä
- Sopii täydellisesti MacBookille ja Chromebookille
- Käytettävissä oleva USB™ Power Delivery 3,0 over USB-C® tukemaan ylivirtalataamista
- DisplayPort™ v1.2 vaaditaan näyttönohjaimelle tai videolähteelle, jossa tuki enintään 4K @ 30 Hz -resoluutiolle

■ Huomautuksia

- Jos käytät suuritehoista USB™-laitetta, kiinnitä Type-C™-verkkoalaite:n virransyöttöporttiin varmistaksesi maksimaalisen suorituskyvyn
- Varmistaaksesi tiedostojen kopioinnin kokonaan, älä irrota Type-C™-verkkolaitetta tiedostojen kopioitaessa



Magyarország

■ Jellemzők

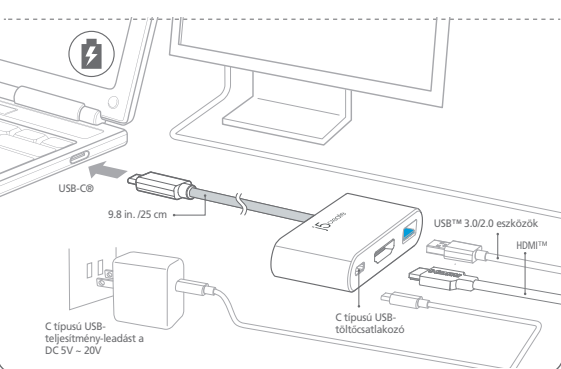
- HDMI™ port támogatja 3840 x 2160 @ 30 Hz
- USB™ 3.0 port 5Gbps visszafelé kompatibilis az USB 2.0 és USB 1.1 eszközök
- Támogatja upstream töltés és teljesítmény-leadás 3.0 USB-C® töltőcsatlakozó

■ Rendszerkövetelmények

- Elérhető USB-C® port (USB™ 3.1 Gen 1 Type-C ajánlott)
- Elérhető megjelenítése Alternatív mód felett C típusú USB™-csatlakozó
- Tökéletes MacBook és Chromebook
- Szabad USB Power Delivery 3.0 felett C típusú USB™-támogatása upstream töltés
- DisplayPort™ v1.2 szükséges a grafikus kártya vagy a videó forrás támogatására 4K @ 30 Hz

■ Megjegyzések

- Ha egy nagy teljesítményű USB™ eszközt kérjük, csatlózza a C típusú hálózati adaptert a teljesítmény-leadás port biztosítja a maximális teljesítményt.
- Ahhoz, hogy biztosítsuk a fájlok másolása teljesen, ne távolítsa el a C típusú hálózati adaptert fájlok másolása



Česky

■ Funkce

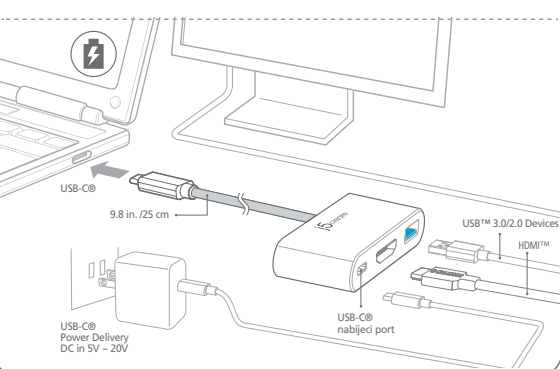
- HDMI™ port podporuje rozlišení 3840 x 2160 @ 30 Hz
- USB™ port 3.0 5Gbps zpětně kompatibilní s USB™ 2.0 a USB 1.1
- Podporuje upstream nabíjení a napájení dodávkou 3.0 přes nabíjecí USB-C® portu

■ Požadavky na systém

- Type-C je k dispozici USB™ port (USB™ 3.1 Gen 1 Type-C je doporučeno)
- K dispozici Display Alternate Mode přes USB konektor typu C.
- Ideální pro MacBook a Chromebook
- K dispozici USB Power Delivery 3.0 přes USB-C® podporuje upstream nabíjení
- DisplayPort™ v1.2 nutné na grafickou kartu nebo video zdrojů na podporu 4K @ 30 Hz

■ Poznámky

- Pokud používáte vysoce výkonný USB™ zařízení přiložte Type-C napájecí adaptér do aplikátoru napájení portu pro zajištění maximálního výkonu.
- Pro zajištění soubory kopírovat úplně, zatímco neodstraňujte síťový adaptér Type-C Kopírování souborů



Русский

Переходник USB-C® на HDMI™ и USB™ Type-A 3.0/ Power Delivery (JCA379) / Eco-friendly переходник USB-C® на HDMI™ и USB™ Type-A 3.0/ Power Delivery (JCA379EW/ER/EC)

■ Технические особенности

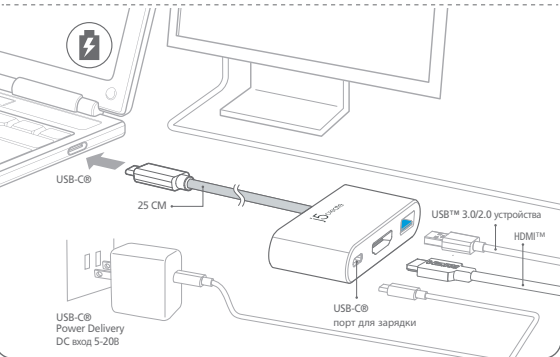
- Разрешение (HDMI™): до 3840 x 2160@30 Гц
- USB™ Type-A 3.0 порты с поддержкой скорости передачи данных до 5 Гбит/с и обратной совместимостью с USB™ 2.0 и USB™ 1.1 устройствами
- Поддержка зарядки и Power Delivery 3.0 через USB-C® порт
- Изготовлен из экологически чистых переработанных материалов, сертифицированных UL (JCA379EW/ER/EC)

■ Системные требования

- Доступный USB-C® порт (рекомендуется USB™ 3.1 Gen 1 Type-C)
- Доступный USB-C® порт с поддержкой DisplayPort™ Alt Mode
- Идеально подходит для MacBook® и Chromebook
- Для зарядки ноутбука или др. устройства через USB™ Type-C требуется USB-C® порт с поддержкой Power Delivery 3.0
- Для поддержки разрешения 4K@30 Hz на видеокарте или др. источнике видео сигнала требуется поддержка DisplayPort™ v1.2

■ Примечания

- При подключении USB™ устройств с высоким энергопотреблением, для обеспечения максимальной производительности рекомендуется подключить к PD порту доп. USB-C® блок питания
- Чтобы обеспечить полное копирование файлов, не извлекайте USB-C® блок питания до завершения копирования



日本語

■ 特徴

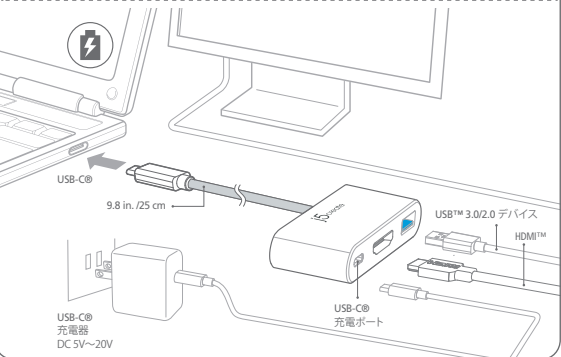
- HDMI™ポート:3840 x 2160 @ 30 Hz対応
- USB™ 3.0ポート:超高速5Gbps(理論値)USB™ 2.0、USB™ 1.1下位互換性
- USB-C® 充電ポート:パワーデリバリー3.0対応で機器の充電が可能

■ 必須環境

- ホストのUSB-C規格はUSB3.1 Type-Cを推奨。
- USB Type-Cを備えるホスト側がDisplayPort Alt modeとPower Deliveryに対応している必要があります。
- 4K 30Hz出力にはディスプレイが4K 30Hzに対応し、ホスト側のType-CポートにもDisplayPort 1.2に対応している必要があります。

■ ご注意

- 大電流を必要とするUSB™ 機器を使用する場合は、Type-C電源アダプターをのパワーデリバリーポートに接続してください。
- ファイルをコピーする際は、コピーが完了するまで、Type-Cの電源アダプターを外さないでください。



繁體中文

■ 特色

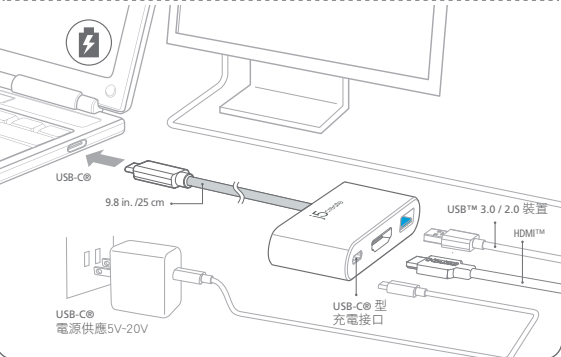
- HDMI™埠支援最高解析度3840 x 2160 @ 30 Hz
- USB™ 3.0 埠,高達5Gbps/傳輸速率,向下兼容USB 2.0和1.1設備
- USB-C® 埠支援USB™ Power Delivery 3.0 ,提供向上充電功能

■ 系統需求

- USB-C® 埠(建議USB 3.1 Gen 1)
- Type-C 埠需支援DP Alt-Mode
- 完整支援Macbook和Chromebook
- 支援Power Delivery 3.0透過USB Type-C™向上充電
- 顯卡需支援DisplayPort™ v1.2和影片來源需支援4K @ 30 Hz

■ 注意

- 當連接高耗電的USB™設備時(如外接硬碟),請連接PD電源供應器於USB-C® 電源接口,以確保最佳的效能。
- 為確保檔案完整性,請避免在複製檔案時插拔PD電源供應器。



FCC Information

This equipment has been tested and found to comply with the limits for a Class B digital device, pursuant to part 15 of the FCC Rules. These limits are designed to provide reasonable protection against harmful interference in a residential installation. This equipment generates, uses and can radiate radio frequency energy and, if not installed and used in accordance with the instructions, may cause harmful interference to radio communications. However, there is no guarantee that interference will not occur in a particular installation. If this equipment does cause harmful interference to radio or television reception, which can be determined by turning the equipment off and on, the user is encouraged to try to correct the interference by one or more of the following measures:

- Reorient or relocate the receiving antenna.
- Increase the separation between the equipment and receiver.
- Connect the equipment into an outlet on a circuit different from that to which the receiver is connected.
- Consult the dealer or an experienced radio/TV technician for help.

This device complies with part 15 of the FCC Rules. Operation is subject to the following two conditions: (1) This device may not cause harmful interference, and (2) this device must accept any interference received, including interference that may cause undesired operation.

Changes or modifications not expressly approved by the party responsible for compliance could void the user's authority to operate this device.

LIMITED WARRANTY

j5create offers a limited 2-year warranty. User's wear & tear damage is not included. The user shall call or email j5create customer service with the defect information of the product and obtain a return authorization number. Users are responsible for one-way return freight cost and we will take care of one-way freight back. In order to obtain a return authorization number, users should have the following information handy when calling or emailing the service team:

- a copy of the original purchase invoice to verify your warranty
- a product serial number
- a description of the problem
- customer's name, address, and telephone number

j5create does not warrant that the operation of the product will be uninterrupted or error-free. j5create is not responsible for damage arising from failure to follow instructions relating to the product's use. This warranty does not apply to: (a) consumable parts, unless damage has occurred due to a defect in materials or workmanship; (b) cosmetic damage, including but not limited to scratches, dents, and broken plastic on ports; (c) damage caused by use with non-j5create products; (d) damage caused by natural disasters; (e) damage caused by human misuse (lost, accident, abuse, misuse or other external causes); (f) damage caused by operating the product outside the permitted or intended uses described by j5create; (g) damage caused by service (including upgrades and expansions) performed by anyone who is not a representative of j5create or a j5create Authorized Service Provider; (h) a product or part that has been modified to alter functionality or capability without the written permission of j5create; or (i) if any j5create serial number on the product has been removed or defaced. If such a situation occurs, j5create will calculate the cost of materials and repair for your reference. This warranty is given by j5create in lieu of any other warranties expressed or implied.

LIMITATION OF WARRANTY

THIS WARRANTY GIVES YOU SPECIFIC LEGAL RIGHTS, AND YOU MAY HAVE OTHER RIGHTS THAT VARY FROM STATE TO STATE (OR BY COUNTRY OR PROVINCE). OTHER THAN AS PERMITTED BY LAW, J5CREATE DOES NOT EXCLUDE, LIMIT OR SUSPEND OTHER RIGHTS YOU MAY HAVE, INCLUDING THOSE THAT MAY ARISE FROM THE NONCONFORMITY OF A SALES CONTRACT. FOR A FULL UNDERSTANDING OF YOUR RIGHTS YOU SHOULD CONSULT THE LAWS OF YOUR COUNTRY, PROVINCE OR STATE. TO THE EXTENT NOT PROHIBITED BY LAW IN YOUR STATE, PROVINCE, JURISDICTION OR COUNTRY, THIS WARRANTY AND THE REMEDIES SET FORTH ARE EXCLUSIVE AND IN LIEU OF ALL OTHER WARRANTIES, REMEDIES AND CONDITIONS, WHETHER ORAL, WRITTEN, STATUTORY, EXPRESS OR IMPLIED.

J5CREATE'S RESPONSIBILITY FOR MALFUNCTIONS AND DEFECTS IN HARDWARE AND/OR SOFTWARE IS LIMITED TO REPAIR OR REPLACEMENT AS SET FORTH IN THIS WARRANTY. J5CREATE'S LIABILITY DOES NOT EXTEND BEYOND THE REMEDIES PROVIDED FOR IN THIS LIMITED WARRANTY, AND J5CREATE DOES NOT ACCEPT LIABILITY FOR CONSEQUENTIAL OR INCIDENTAL DAMAGES, FOR THIRD-PARTY CLAIMS AGAINST YOU FOR DAMAGES, FOR PRODUCTS NOT BEING AVAILABLE FOR USE, OR FOR LOST OR DAMAGED DATA OR SOFTWARE. J5CREATE DOES NOT WARRANT THAT THE OPERATION OF ANY J5CREATE PRODUCT WILL BE UNINTERRUPTED OR ERROR FREE.

J5CREATE'S LIABILITY IN ANY SITUATION WILL BE NO MORE THAN THE AMOUNT YOU PAID FOR THE SPECIFIC PRODUCT THAT IS THE SUBJECT OF A CLAIM. THIS IS THE MAXIMUM AMOUNT FOR WHICH WE ARE RESPONSIBLE.

EXCEPT FOR THE EXPRESS WARRANTIES CONTAINED IN THIS WARRANTY AND TO THE EXTENT NOT PROHIBITED BY LAW, J5CREATE DISCLAIMS ALL OTHER WARRANTIES AND CONDITIONS, EXPRESS OR IMPLIED, STATUTORY OR OTHERWISE, INCLUDING WITHOUT LIMITATION, WARRANTIES OF MERCHANTABILITY, MERCHANTABLE QUALITY AND FITNESS FOR A PARTICULAR PURPOSE AND WARRANTIES AND CONDITIONS AGAINST HIDDEN OR LATENT DEFECTS. SOME STATES, PROVINCES, JURISDICTIONS OR COUNTRIES DO NOT ALLOW DISCLAIMERS OF IMPLIED WARRANTIES AND CONDITIONS, SO THIS DISCLAIMER MAY NOT APPLY TO YOU.

TO THE EXTENT SUCH WARRANTIES AND CONDITIONS CANNOT BE DISCLAIMED UNDER THE LAWS OF THE UNITED STATES, CANADA (AND ITS PROVINCES) OR OTHERWISE, J5CREATE LIMITS THE DURATION AND REMEDIES OF SUCH WARRANTIES AND CONDITIONS TO THE DURATION OF THIS EXPRESS LIMITED WARRANTY AND, AT J5CREATE'S OPTION, REPAIR OR REPLACEMENT SERVICES. SOME STATES, PROVINCES, JURISDICTIONS OR COUNTRIES MAY NOT ALLOW LIMITATIONS ON HOW LONG AN IMPLIED WARRANTY OR CONDITION MAY LAST, SO THE LIMITATION DESCRIBED ABOVE MAY NOT APPLY TO YOU.

NO WARRANTIES OR CONDITIONS, WHETHER EXPRESS OR IMPLIED, WILL APPLY AFTER THE LIMITED WARRANTY PERIOD HAS EXPIRED. SOME STATES, PROVINCES, JURISDICTIONS OR COUNTRIES DO NOT ALLOW LIMITATIONS ON HOW LONG AN IMPLIED WARRANTY OR CONDITION LASTS, SO THIS LIMITATION MAY NOT APPLY TO YOU.

WARRANTY SUPPORT ONLY APPLIES WHEN THE COVERED PRODUCT IS LOCATED WITHIN THE COUNTRY IN WHICH J5CREATE ORIGINALLY SOLD THE SYSTEM, AS REFLECTED IN J5CREATE'S RECORDS. IF YOU NEED SUPPORT FOR THE PRODUCT OUTSIDE OF THE COUNTRY OF ORIGIN (FOR EXAMPLE, WHILE TRAVELING, OR IF THE SYSTEM HAS BEEN RELOCATED TO A NEW COUNTRY), THEN J5CREATE MAY OFFER YOU OTHER SUPPORT OPTIONS FOR AN ADDITIONAL CHARGE.

For more information please visit our website at <http://www.j5create.com>

Copyright © 2023 j5create. All rights reserved. All trade names are registered trademarks of their respective owners. Features and specifications are subject to change without notice. Product may not be exactly as shown in the diagrams.