

Network USB LPR Printer Server

Quick Start Guide



PRINT SERVER

Environment Setup

The picture below depicts a sample household Network USB LPR Printer use environment. To setup the device, simply plug it into the home/Office network under the same router and power it on. Then it could be shared by all the Computers on the same Network.

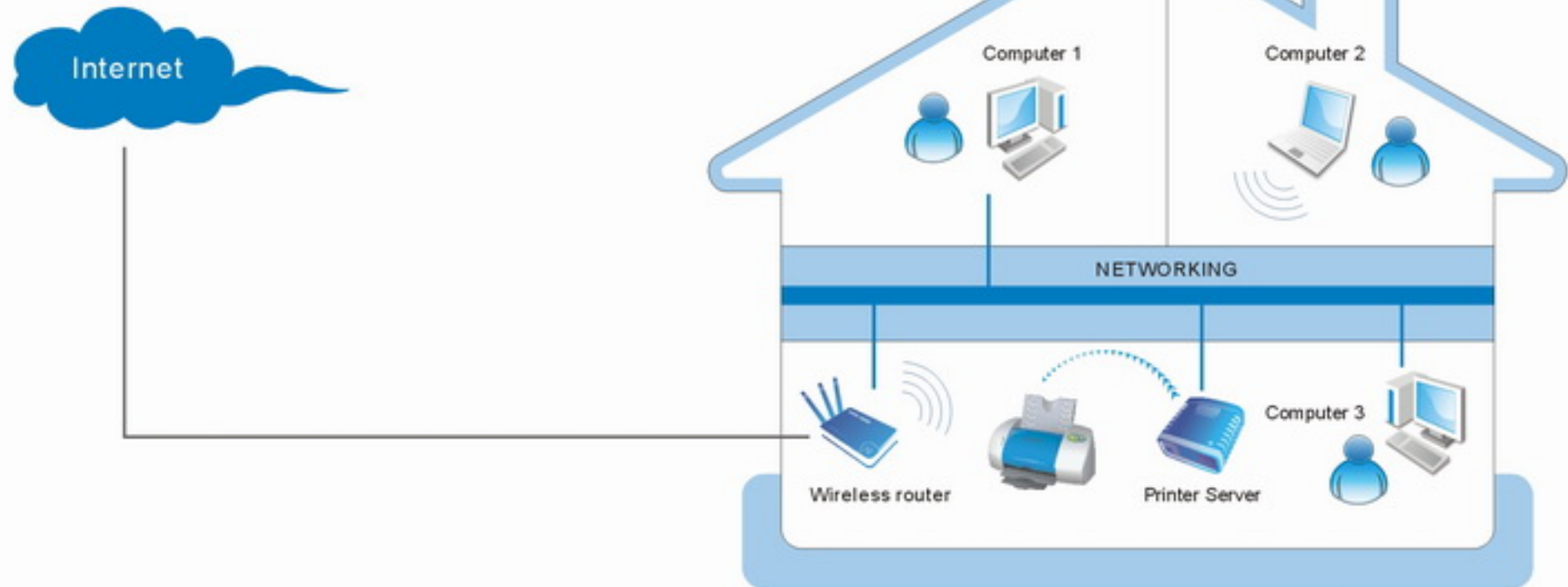





Table of Content

| | |
|---|----|
| Introduction..... | 01 |
| Hardware Installation..... | 02 |
| Printer Setup on Windows 2000/XP/VISTA..... | 03 |
| Printer Setup on Mac OS X..... | 09 |
| Networking USB Server Utility/Device Setup..... | 13 |
| Removing Printer Server Utility | 21 |
| Configuration with Web-based UI | 23 |
| USB LPR Printer Compatibility List..... | 27 |



Introduction

Thank you for purchasing this Network USB LPR Printer Server that allows any networked computer to share a USB printer. It complies with USB 2.0 Specification (and is backward compatible with USB 1.1), and provides an auto-sensing Ethernet port that works with either 10Base-T or 100Base-T networks. This unit also supports multiple protocols and multiple operating systems. The built-in web management feature provides more convenience by allowing the user to configure, monitor and even reset the USB server via a web browser. We hope that you will enjoy using your Printer Server and find it to be a useful solution.

Features

- Easily connects your USB LPR Printer to a network
- Allows multiple computers to share USB Printer on the network
- Print from any computer on your network
- Supports DHCP Client and multiple network protocols
- 10Base-T/100Base-T auto-sensing
- Supports Web Management

Package Contents

- Networking USB LPR Printer Server
- CAT5 Patch Cable
- Power Adapter
- Installation CD
- User Manual

If any items are damaged or missing, please contact your dealer.

System Requirements

- Windows 2000/XP/2003/Vista
- Mac OS X 10.5 or later
- Device with a USB connection

Hardware Installation

1. Connect a USB cable from the USB Printer to the USB port on the Printer Server.
2. Connect one end of the Ethernet patch cable to the Ethernet port on the Print server.
3. Connect the other end of the Ethernet cable to the network. It can be plugged into a router, Ethernet Switch/hub, or bridge.
4. Connect the Power adapter to the Printer Server.



Printer Setup on Windows 2000/XP/VISTA

Provides a straight forward and easy-to-use utility that helps you to set up USB printers connecting to LPR Printer server as network printers, Network Printer Wizard. This utility reduces the dozens of steps in setting up network printer via Windows build-in printer setup program to a few point-and-clicks with the mouse. Users no longer need to deal with the confusing IP setting, queue name entering and port configuration.

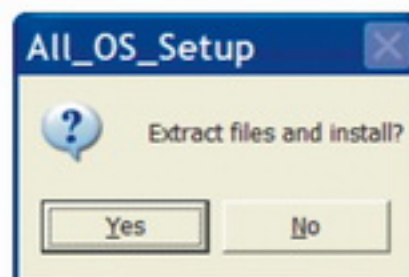
Network Printer Wizard Installation

To start the installation, please click on the [Install Networking Printer Wizard](#):

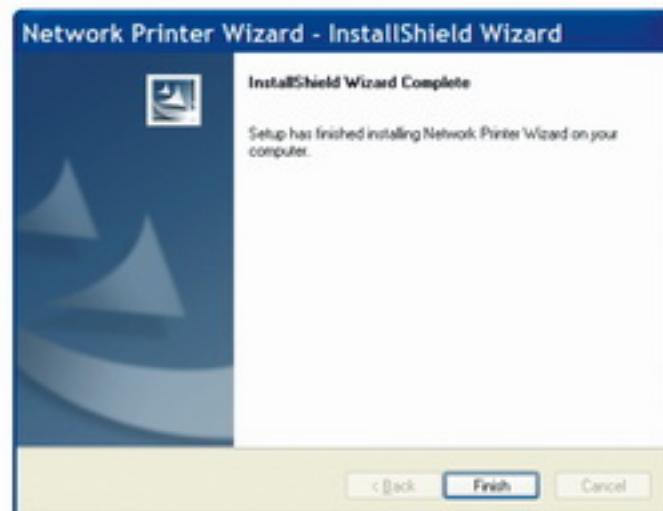


Wait for the installer to run

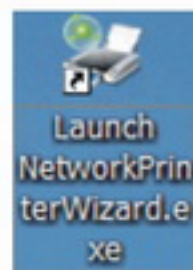
Extract Files and install? click on Yes:



Click on **Finish** to exit installer once installation completes:



The installer creates a shortcut on the Desktop for you:



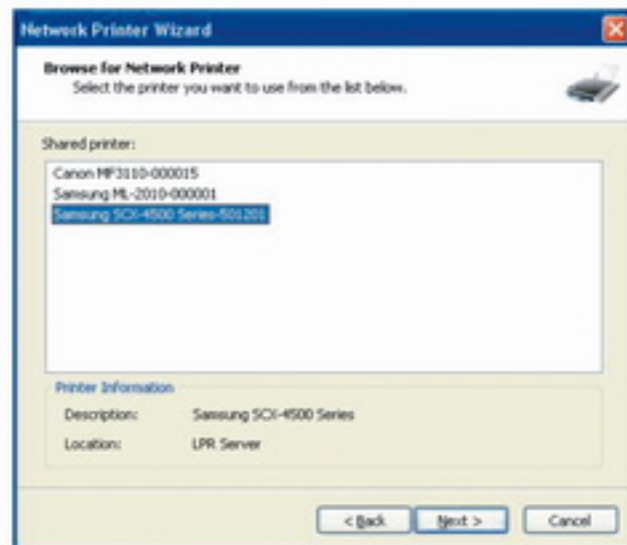
Network Printer Wizard Setup

1. Now we can start setting up your printer. Please click on the Launch Network Printer Wizard icon created on The desktop.

2. Please click on **Next** to continue when you see this welcome dialog box.

3. Please select the printer you would like to setup on this list and then Click on **Next**. The number of printers you see on this list depends on the number of printers that are connected to your network. If you only have One printer on the network, you see only one printer on this list.

If you don't see any printers, please make Sure your printers and USB LPR Printer Server is correctly powered on and connected to the Network.

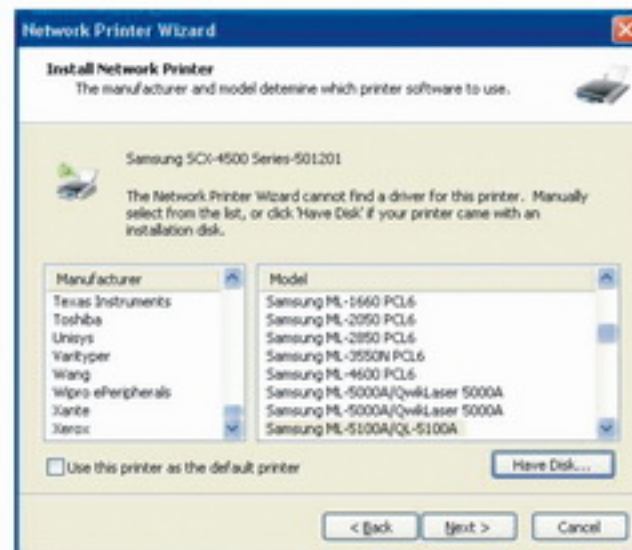


4. On the next dialog box, please select the driver From the list if it's there, and then click on the **Next** button and go to **step 7**. Else, read on. If you can't find the target printer's driver on the list, please insert the disk containing the printer's driver, click on **Have Disk...** button then go to step 5.

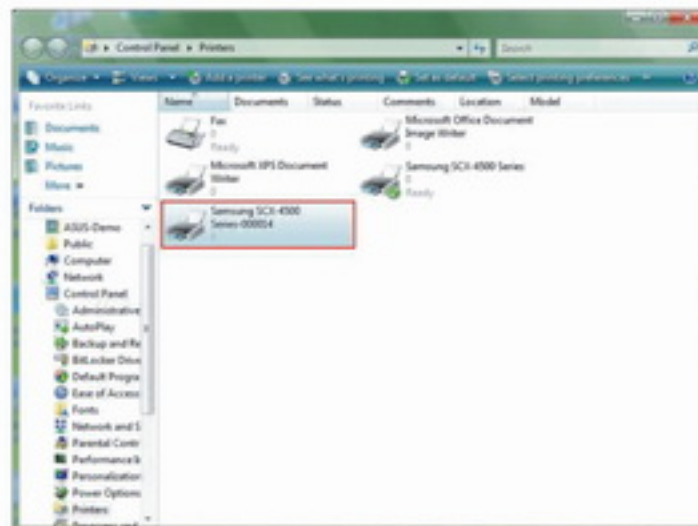
5. You must browse to the folder that contains the driver for your printer and click on **OPEN** to use it:

6. Then, select the driver from the list again and then click on the **Next** button. If you didn't select the correct driver, here is the chance for you to verify. Please click on **Have Disk** again to re-select.

7. Once you have selected the correct driver from the list, please click on **Finish** button. The wizard might take a minute to setup the network printer for you.



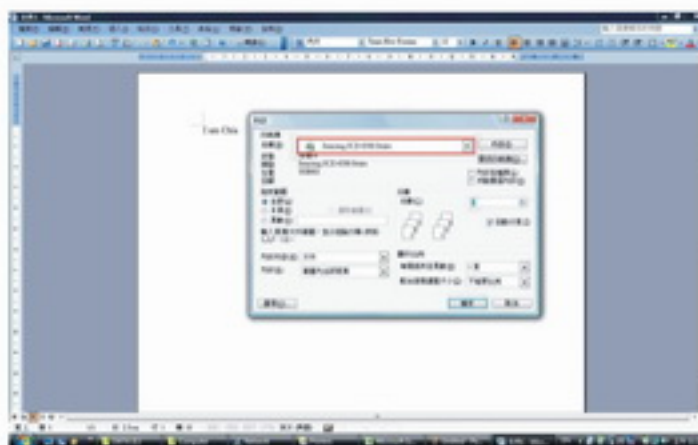
8. After the printer has been setup correctly, you can see it under **Control Panel > Printers:**



Now you can print any document using the printer you just Setup:

If you have more than one printer Setup, please make sure you have selected the correct printer to print.

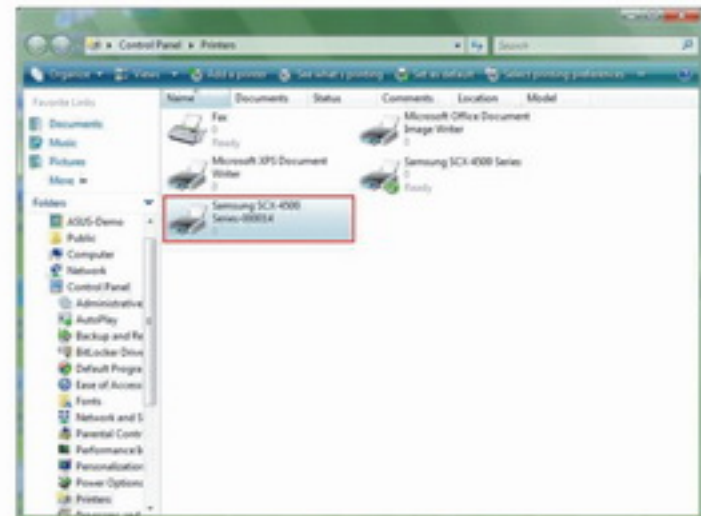
NOTE: REMEMBER, THIS SETUP IS A ONE-TIME THING. YOU DO NOT HAVE TO RUN THIS PROCESS EVERY TIME YOU WANT TO PRINT. HOWEVER, OF COURSE, IF YOU REMOVE THE NETWORK PRINTER WIZARD PROGRAM, YOUR PRINTER SETUP WILL NO LONGER WORK.



Remove the Printer Setting

To remove the printer setup, please go to the **Control Panel > Printers** dialog box and remove the printer entry from it.

Simply **Delete** this icon by pressing **Del** key on your Keyboard. Then It Will be removed from the list of usable printers when you print document.



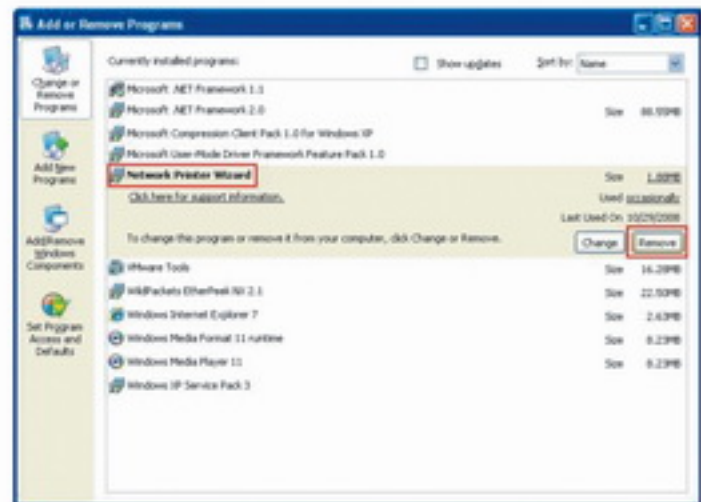
Remove the Program

To remove the Network Printer Wizard program, please go to the **Control Panel > Add or Remove Programs (Programs and Features** on Windows VISTA)

Then select “remove the program”

Then follow the instructions of the installer complete the removing process.

PLEASE NOTE: Once you remove this problem, you will no longer be able to print using the printers you setup with Network Printer Wizard



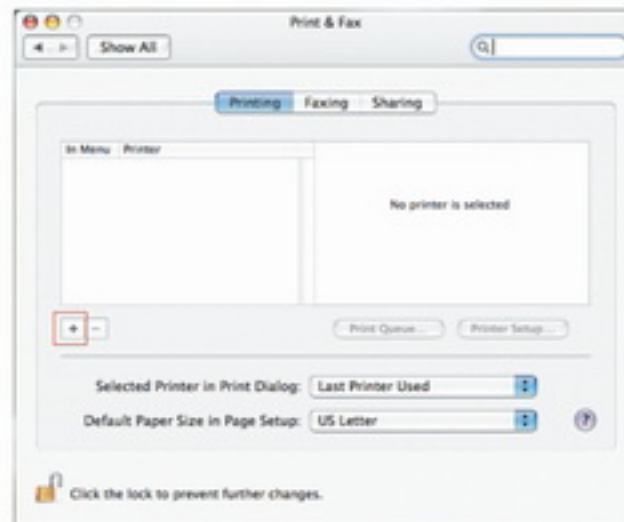
Printer Setup on Mac OS X™

1. MAC OS by Apple Inc. comes with a built-in utility very similar to Network Printer Wizard. To start, please go to “System Preferences” on the Dock menu:

2. Once you have the “System Preferences” window up, please Locate the “Print & Fax” item.

Double click on “Print & Fax” to start selecting printer for installation.

3. This window shows you the printers that have been installed on your Mac. To install a new printer, please click on the “+” button to select printers.

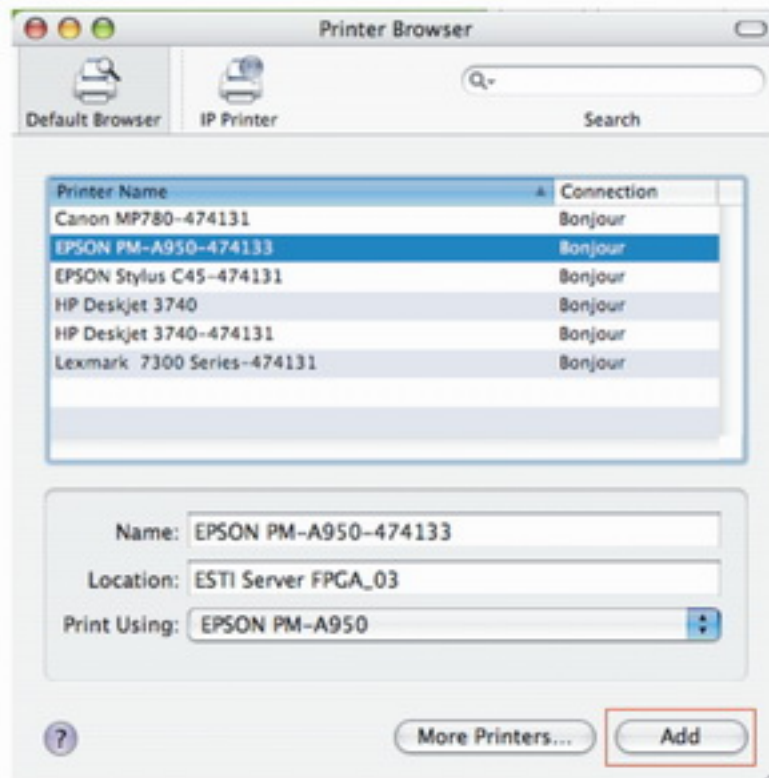


4. Select the printer you would like to setup from the list. The number of printers you see on this list depends on the number of printers that are connected to your network. If you only have one printer on the network, you see only one printer on this list.

If you don't see any printers, please make sure your printers and Networking LPR Printer Server is correctly powered on and connected to the network

5. As you select the printer to install, Bonjour will select the correct printer driver for you and is shown at the "Print Using:" field:

Once you have highlighted the printer to install, click on **Add** button to install it.



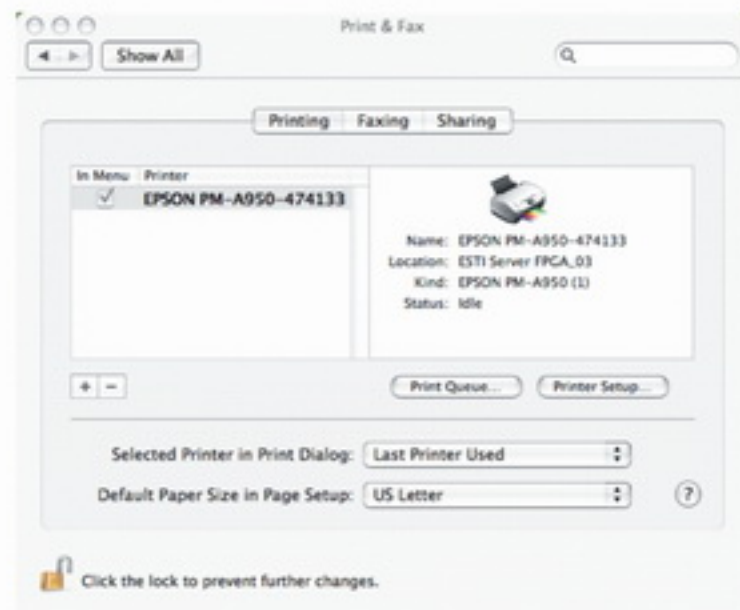
Network

USB LPR Printer Server

6. Once installation is done, you should be able to see this on your “Print & Fax” window. You will see that the A950 printer appeared on the available printer list. now you can use this Printer to print your documents or pictures.

NOTE: REMEMBER, THIS SETUP IS A ONE-TIME THING. YOU DO NOT HAVE TO RUN THIS PROCESS EVERY TIME YOU WANT TO PRINT.

7. When printing your document, simply select the printer you just setup on the available printer list.



Removing the Printer Setting

1. To remove a printer setting, please go to your Printer and FAX again:

Select from the available printer list on the left and then click on the “-” button to remove it.



2. Once removed, the printer will disappear from the list
And when you print document, you will not be able to select it anymore.



Networking USB Server Utility/Device Setup

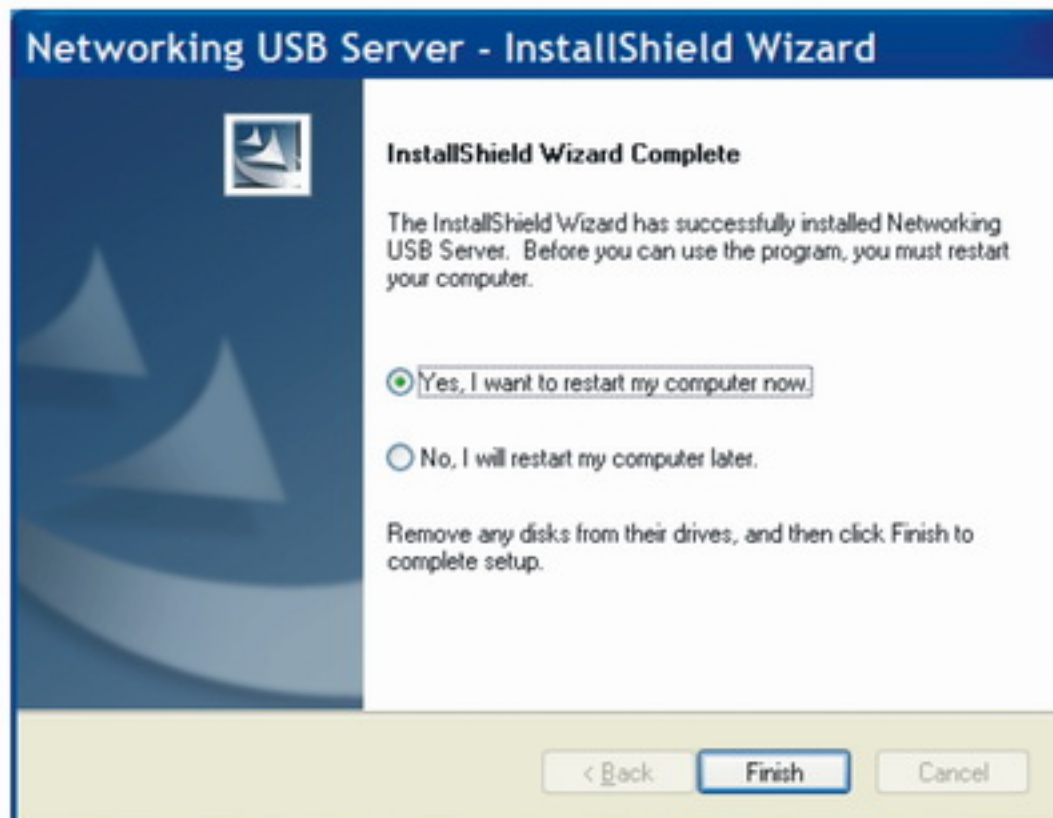
Installation

To install the Networking USB Server program, please click the [Install Networking USB Server](#)



The installer will automatically install the program. When done click on **Finish** to exit the installer and complete the process.

Select **Yes**, I want to restart my computer now and click **Finish** to reboot your Computer.



Networking USB Server Settings

After the installation completes, a shortcut will be created on your Desktop.



To start the Networking USB Server utility, simply double click the shortcut.

The Networking USB Server utility looks like this at start up. It shows you some basic information about the utility and a device list that displays all the Network USB Devices you can access.



Device Settings

Networking USB Server utility provides some advanced setting functions for users to configure the device to better fit their needs. To bring up the configuration dialog, please RIGHT-CLICK on the device you would like to configure like this.

And select the “Setting” option.

NOTE: ONLY A FREE DEVICE IS ALLOWED TO BE CONFIGURED, AND TEHEREFORE THIS SETTING OPTION ONLY APPEARS ON FREE NETWORK USB DEVICE



Network

USB LPR Printer Server

If a protective password has been set, this action brings up this Dialog:

This dialog box indicates a protective password has been set. In order to access the configuration functions, you must enter the correct password.



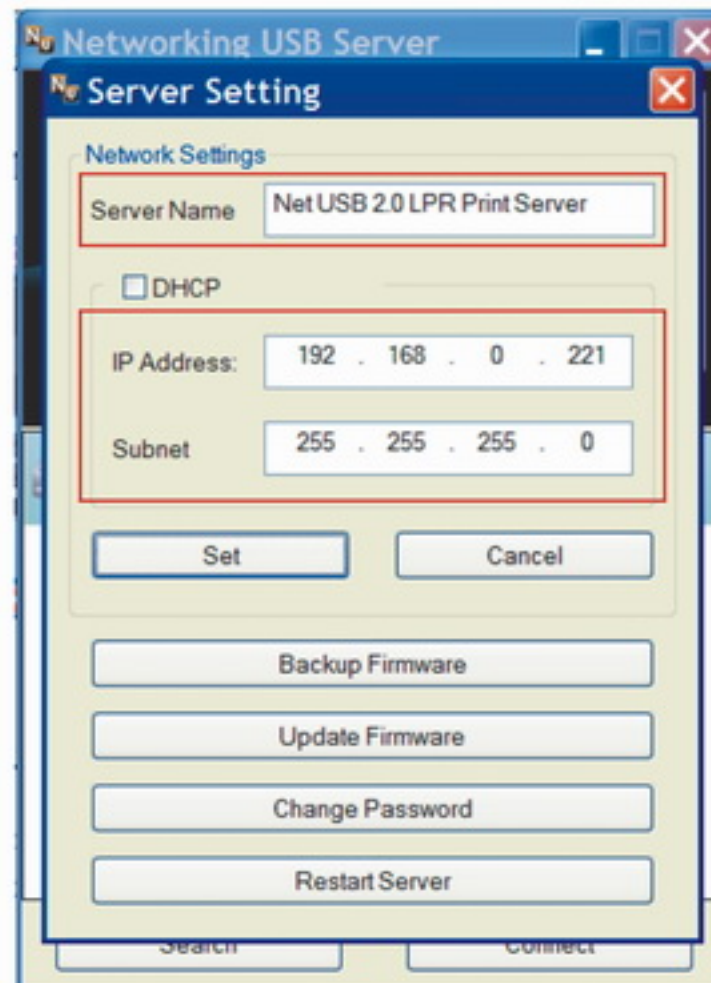
If the correct password has been entered or Password null, you should see this following dialog box:

As you can see, this dialog box comes with many functions and some of these functions are similar to those you see on the web pages.

Set Server Name and IP Address

First thing you would see is the text field for your changing the server name and IP address. You may have noticed the “DHCP” checkbox. When this checkbox is checked, the fields for you to enter IP address grays out. That is because checking this box meaning you want the server to get IP automatically like your PC does, so the IP address fields grays out. If you are a seasoned network device user and you would like to set the IP Address by yourself, simply Uncheck this checkbox:

And you will be able to enter a Fixed IP address for your server. Once you have entered the new server name and IP address, click on “Set” button to finalize the new setting. The “Cancel” button exits this dialog box without doing any thing.



Backup Firmware

Backup firmware function is a fail-save mechanism for the Update Firmware function. You can backup the current firmware of your server and save it on your PC in case you updated the latest firmware and want to revert back for some reasons.

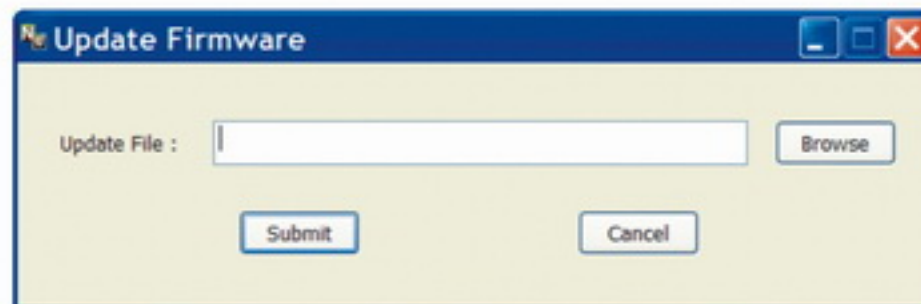
Click on the “Backup Firmware” button and you should see this dialog box:



“Browse” button allows you to choose where on your PC you would like to save the firmware back-UP. Once the save location is set, click on “Submit” to start backing up. click on “Cancel” button exits this dialog box without doing anything.

Update Firmware

Clicking on the “Update Firmware” button brings up this dialog box:

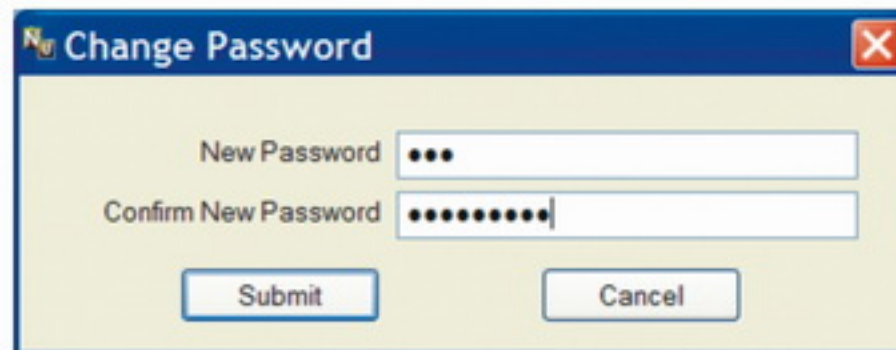


Clicking on “Browse” to choose the latest firmware your vender provided and then click on the “Submit” to start updating. click on “Cancel” button exits this dialog box without doing anything.

Change Password

This function allows you to change the current Password or set a new password if none has been set. Click on the button to bring up this dialog:

Enter the password you want to set and enter it again for confirmation, then Click “Submit” button to Finalize it.



Reset Server

As it suggests, this button resets the server. **Please note that this function will not work if the device is Currently occupied.**

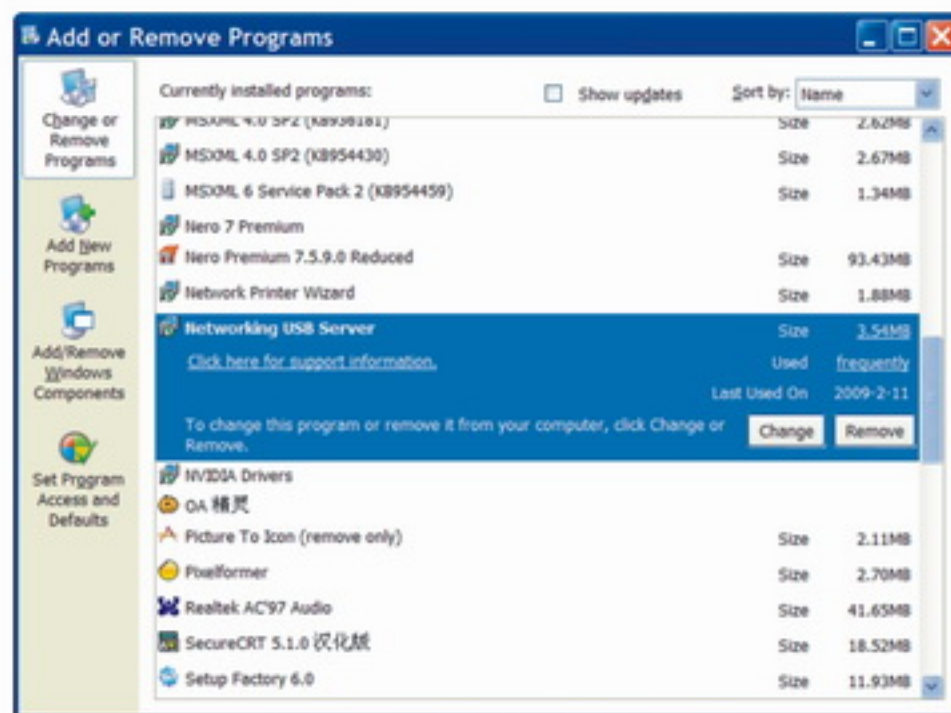


Removing Networking USB Server Utility

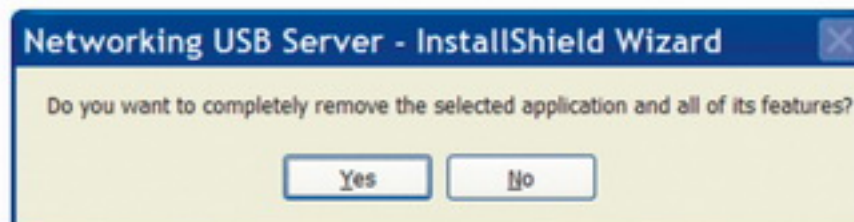
To uninstall Networking USB Server software, please go to Control Panel > [Add or Remove Programs](#)

Then please browse through the program list and find Networking USB Server program

Please select it and click on the [Change/Remove](#) button. Then the un-installer will start up and prompt you:



Please click on **Yes**, then the uninstall process will start automatically. Once finished, you will be notified:



Then the installer will prompt you to reboot:

Please select **Yes, I want to restart my computer now option** and then click on **Finish** to restart your computer. This completely uninstalls the Networking USB Server software From your computer.



Configuration with Web-based UI

- Default USB Server IP Address can be found at The back of USB Print Server.
- If Default USB Print Server IP Address changed, just input new IP Address in web browser.
- Use the “View Device Webpage” option on the USB Server GUI right-click menu to open up the Web-base UI of a device. Configuration methods, Pleas refer to Management Section in Manual.

Your default web browser will pop up and take you into the web-based configuration UI of the server.

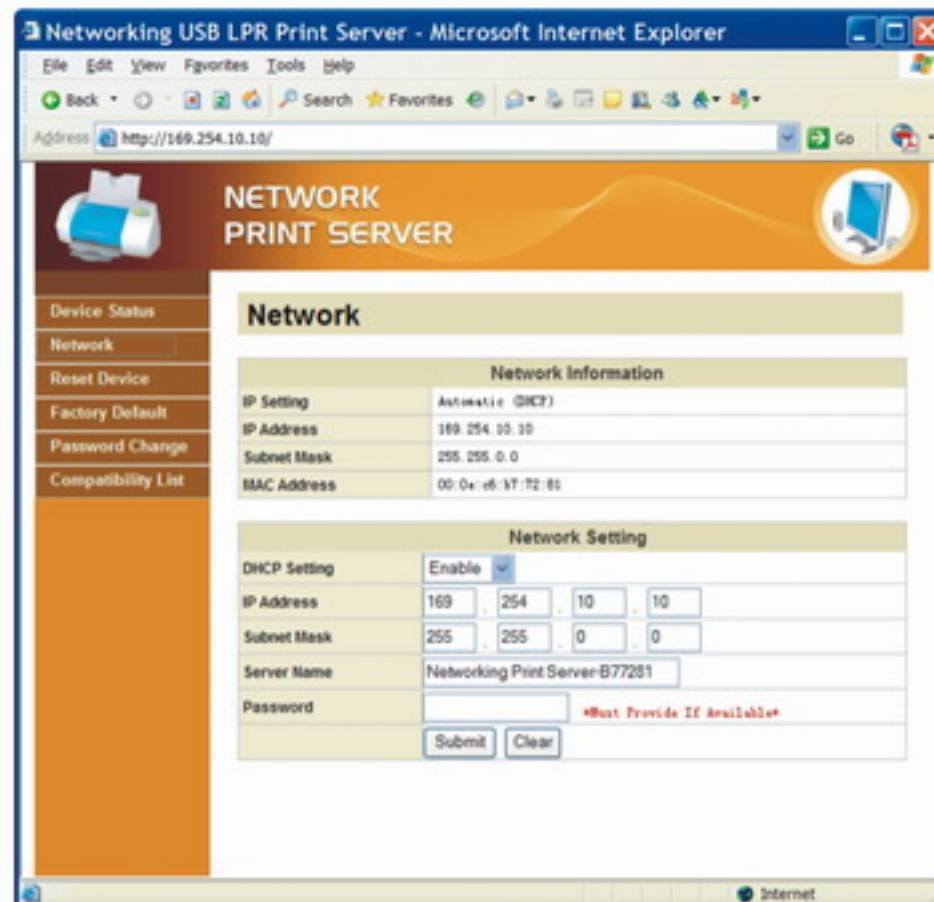
This is the main page of the configuration UI. You can see the important information about the Networking USB Printer Server and the device(s) Connected to it. The links at the left side each certain function. Clicking on “**Device Status**” bringing You back to this page, and the other links taking you to other fuctions setting pages.

| USB Server Information | |
|------------------------|--|
| Server Name | Networking Print Server-877281 |
| Manufacturer | WS Tech. |
| Model | Networking USB LPR Print Server |
| Firmware Version | V. 100.073 |
| Server UP-Time | 0 days, 0 hours, 31 minutes, 16 seconds. |

| Device Information | |
|--------------------|----------------------------------|
| Device Name | Hewlett-Packard HP LaserJet 3050 |
| Link Status | Online |
| Device Status | Ready |
| Current User | |

Network Information/Setting

This page displays the current network setting of the server and provides links to the pages where you can perform special actions. You can change the network setting according to your need. However, please note that if you would like to give this server a static IP, please disable the DHCP option. Once you have done, please click on the “Submit” button and reboot the server.

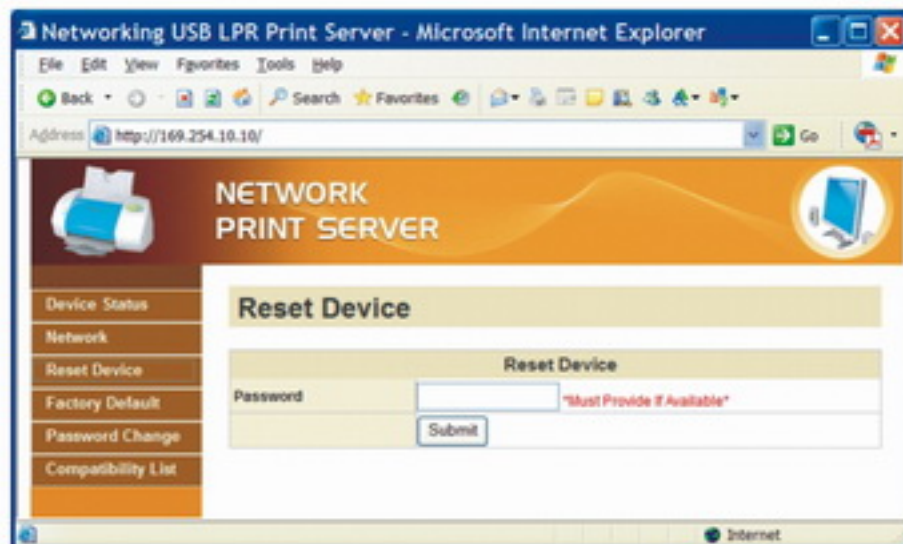


NOTE: A Server with busy device(s) connected is prohibited to be configured to prevent interruption of any on-going tasks.

Server Reset

Clicking on this link taking you to the following page:

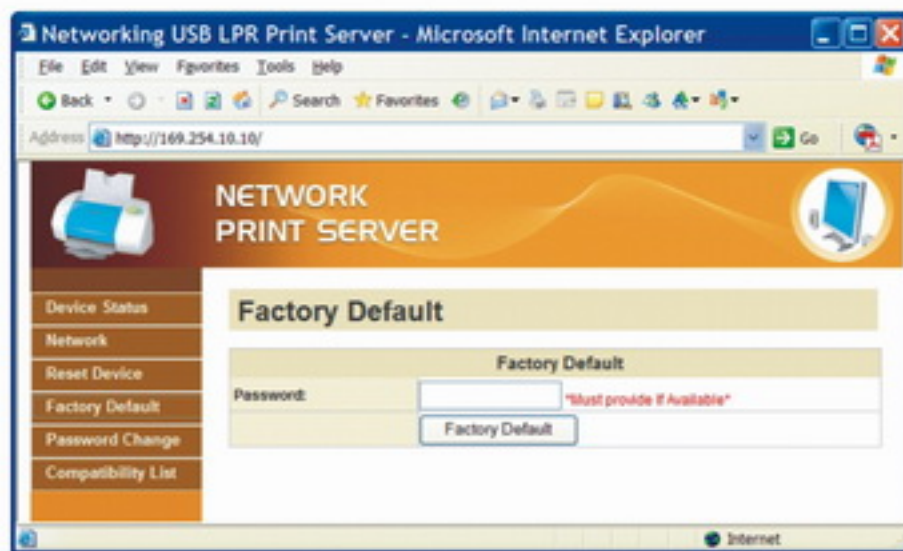
With the “Reset Server” button you can reboot the server. However, if there is a password, you must enter it for this function . Password is by default blank. So, unless a password is explicitly set, you do not have to enter anything for the reset function .



Factory Default

Clicking on this link takes you the page where you can restore the server' s settings back to default:

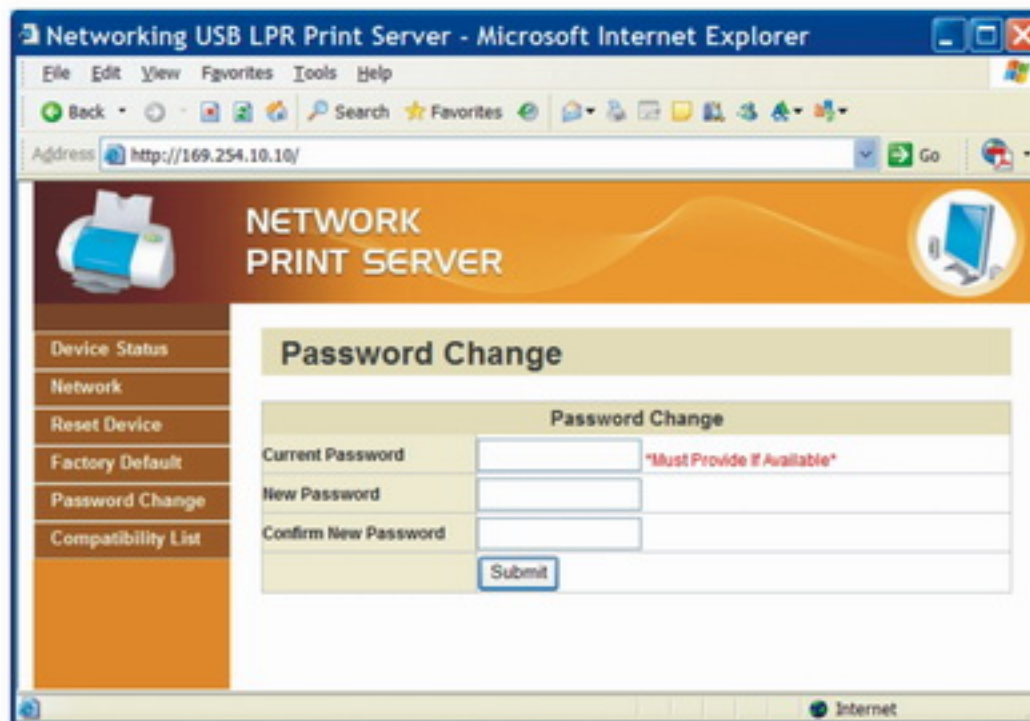
Again, the password is not necessary if no password is set. Just leave the field empty and click on the “Factory Default” button to restore the factory default settings.



Change Password

Clicking on this link taking you to the Password update page:

To change the password, you must enter current password, input new password and re-input new password for confirmation and click on “Submit” . If you are setting the Password for the first time, you don’ t have to Provide current password.



Networking USB LPR Printer Compatibility List

| USB LPR Printer | | | Update: 11/12/2008 | |
|-----------------|---------|-------------------|--------------------|-------|
| No | Brand | Model Name | XP | Vista |
| | | | LPR* | LPR* |
| 1 | Brother | HL 2040 | Pass | Pass |
| 2 | Brother | MFC 3320CN | Pass | Pass |
| 3 | Brother | MFC 3820CN | Pass | Pass |
| 4 | Canon | ImageClass MF3110 | Pass | Pass |
| 5 | Canon | ImageClass MF3112 | Pass | Pass |
| 6 | Canon | ImageClass MF3220 | Pass | Pass |
| 7 | Canon | ImageClass MF3222 | Pass | Pass |
| 8 | Canon | iP100 | Pass | Pass |
| 9 | Canon | iP2500 | Pass | Pass |
| 10 | Canon | iP6700D | Pass | Pass |
| 11 | Canon | iP7500 | Pass | Pass |
| 12 | Canon | iP90 | Pass | Pass |
| 13 | Canon | iP90v | Pass | Pass |
| 14 | Canon | LBP3200 | Pass | Pass |
| 15 | Canon | MP110 | Pass | Pass |
| 16 | Canon | MP130 | Pass | Pass |
| 17 | Canon | MP145 | Pass | Pass |
| 18 | Canon | MP150 | Pass | Pass |
| 19 | Canon | MP160 | Pass | Pass |
| 20 | Canon | MP170 | Pass | Pass |
| 21 | Canon | MP180 | Pass | Pass |
| 22 | Canon | MP450 | Pass | Pass |
| 23 | Canon | MP460 | Pass | Pass |
| 24 | Canon | MP470 | Pass | Pass |
| 25 | Canon | MP510 | Pass | Pass |
| 26 | Canon | MP520 | Pass | Pass |
| 27 | Canon | MP600 | Pass | Pass |
| 28 | Canon | MP610 | Pass | Pass |
| 29 | Canon | MP810 | Pass | Pass |
| 30 | Canon | MP830 | Pass | Pass |
| 31 | Canon | MP960 | Pass | Pass |
| 32 | Canon | MP970 | Pass | Pass |

| | | | | |
|----|-------|---------------|------|------|
| 33 | Canon | MX308 | Pass | Pass |
| 34 | Canon | MX700 | Pass | Pass |
| 35 | Canon | MX7600 | Pass | Pass |
| 36 | Canon | MX850 | Pass | Pass |
| 37 | Canon | Pro9000 | Pass | Pass |
| 38 | Canon | Pro9500 | Pass | Pass |
| 39 | Canon | Satera MF4010 | Pass | Pass |
| 40 | Canon | Satera MF4150 | Pass | Pass |
| 41 | Dell | Photo 720 | Pass | Pass |
| 42 | EPSON | AL-C900 | Pass | Pass |
| 43 | EPSON | EPL-5800 | Pass | Pass |
| 44 | EPSON | EPL-N2500 | Pass | Pass |
| 45 | EPSON | PM-100 | Pass | Pass |
| 46 | EPSON | PM-3700C | Pass | Pass |
| 47 | EPSON | PM-A840 | Pass | Pass |
| 48 | EPSON | PM-A840S | Pass | Pass |
| 49 | EPSON | PM-A950 | Pass | Pass |
| 50 | EPSON | PM-G4500 | Pass | Pass |
| 51 | EPSON | PM-G5300 | Pass | Pass |
| 52 | EPSON | PM-G860 | Pass | Pass |
| 53 | EPSON | PM-T940 | Pass | Pass |
| 54 | EPSON | PM-T960 | Pass | Pass |
| 55 | EPSON | PM-T990 | Pass | Pass |
| 56 | EPSON | PX-501A | Pass | Pass |
| 57 | EPSON | PX-5600 | Pass | Pass |
| 58 | EPSON | PX-5800 | Pass | Pass |
| 59 | EPSON | PX-A640 | Pass | Pass |
| 60 | EPSON | PX-A740 | Pass | Pass |
| 61 | EPSON | PX-FA700 | Pass | Pass |
| 62 | EPSON | PX-V780 | Pass | Pass |
| 63 | EPSON | Stylus C45 | Pass | Pass |
| 64 | EPSON | Stylus C61 | Pass | Pass |
| 65 | EPSON | Stylus C65 | Pass | Pass |
| 66 | EPSON | Stylus C66 | Pass | Pass |
| 67 | EPSON | Stylus C67 | Pass | Pass |

| | | | | |
|----|-------|-------------------|------|------|
| 68 | EPSON | Stylus C90 | Pass | Pass |
| 69 | EPSON | Stylus CX3500 | Pass | Pass |
| 70 | EPSON | Stylus CX3700 | Pass | Pass |
| 71 | EPSON | Stylus CX3810 | Pass | Pass |
| 72 | EPSON | Stylus CX4700 | Pass | Pass |
| 73 | EPSON | Stylus CX4800 | Pass | Pass |
| 74 | EPSON | Stylus Photo 2200 | Pass | Pass |
| 75 | EPSON | Stylus Photo 830 | Pass | - |
| 76 | EPSON | Stylus R320 | Pass | Pass |
| 77 | EPSON | Stylus R510 | Pass | - |
| 78 | HP | Deskjet 3744 | Pass | Pass |
| 79 | HP | Deskjet 3745 | Pass | Pass |
| 80 | HP | Deskjet 640C | Pass | Pass |
| 81 | HP | Deskjet D2360 | Pass | Pass |
| 82 | HP | Deskjet D2460 | Pass | Pass |
| 83 | HP | Deskjet D3745 | Pass | Pass |
| 84 | HP | Deskjet D4160 | Pass | Pass |
| 85 | HP | Deskjet D4260 | Pass | Pass |
| 86 | HP | Deskjet F300 | Pass | Pass |
| 87 | HP | Deskjet F340 | Pass | Pass |
| 88 | HP | Deskjet F350 | Pass | Pass |
| 89 | HP | Deskjet F370 | Pass | Pass |
| 90 | HP | Deskjet F379 | Pass | Pass |
| 91 | HP | Deskjet F380 | Pass | Pass |
| 92 | HP | LaserJet 1010 | Pass | N/A |
| 93 | HP | LaserJet 1015 | Pass | N/A |
| 94 | HP | LaserJet 1018 | Fail | Fail |
| 95 | HP | LaserJet 1020 | Fail | Fail |
| 96 | HP | LaserJet 2600n | Fail | Fail |
| 97 | HP | LaserJet 3030 | Pass | Pass |
| 98 | HP | LaserJet 3050 | Pass | Pass |

| | | | | |
|-----|---------|----------------------|--------|--------|
| 99 | HP | LaserJet 3050z | Pass | Pass |
| 100 | HP | LaserJet 3330 | Pass | Fail |
| 101 | HP | LaserJet 3380 | Pass | Fail |
| 102 | HP | Officejet 5510 | Pass | Pass |
| 103 | HP | Officejet 5610 | Pass | Pass |
| 104 | HP | Photosmart 3110 | Pass | Pass |
| 105 | HP | Photosmart 3210 | Pass | Pass |
| 106 | HP | Photosmart 3310 | Pass | Pass |
| 107 | HP | Photosmart 335 | Pass | Pass |
| 108 | HP | Photosmart 8030 | Pass | Pass |
| 109 | HP | psc 1210 | Pass | Pass |
| 110 | HP | psc 1315 | Pass | Pass |
| 111 | HP | psc 1402 | Pass | Pass |
| 112 | HP | psc 1410 | Pass | Pass |
| 113 | HP | psc 1510 | Pass | Pass |
| 114 | HP | psc 1610 | Pass | Pass |
| 115 | HP | psc 2410 | Pass | Pass |
| 116 | HP | psc 2510 | Pass | Pass |
| 117 | LEXMARK | 1270(w internal hub) | Fail | Fail |
| 118 | LEXMARK | E120n | no ink | no ink |
| 119 | LEXMARK | p4350 | Fail | Fail |
| 120 | LEXMARK | p6250 | Fail | Fail |
| 121 | LEXMARK | x2650 | Fail | Fail |
| 122 | LEXMARK | x3470 | Fail | Fail |
| 123 | LEXMARK | x3550 | Fail | Fail |
| 124 | LEXMARK | x4270 | Fail | Fail |
| 125 | LEXMARK | x7350 | Fail | Fail |
| 126 | Samsung | ML2010 | Pass | Fail |
| 127 | Samsung | SCX-4500 | Pass | Pass |

N/A: Not Support

Fail:



PRINT SERVER

Network USB LPR Printer Server



USB LPR Print Server



USB 2.0 Server M1



USB 2.0 Server M4



USB 2.0 Server M4



Wireless 11N USB 2.0 SOHO
Manager M4