

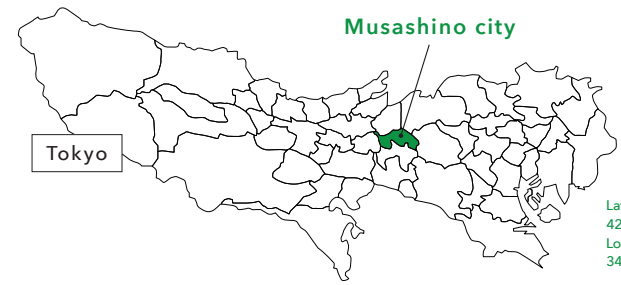
English

Musashino City Visitor's Guide

Kichijoji Area

North Mitaka Area

Musashisakai Area



Musashino city

Tokyo

Latitude: 35 degrees
42 minutes 53 seconds north;
Longitude: 139 degrees
34 minutes 10 seconds east

Welcome to Musashino city!

Since ancient times, areas surrounding Inokashira Pond has been filled with pure spring water. Its remains reveal that this was where people gathered to search for rich harvest and prey throughout the old Stone Age to the Jōmon period. The city started founding in the early Edo period (17th century) as a massive fire occurred in downtown Tokyo, forcing a temple called “Kichijoji” as well as the residents of the town to evacuate. In search of a new place, they decided to settle down in areas around Inokashira Pond. The city was named after that very temple and has been known since as “Kichijoji”. As people settled, they gradually developed and formed four villages within the area. With the opening of railways in 1899, the city starts to grow. In 1917, Inokashira Park opened as the first suburban park in Japan and became a very popular destination for people to visit. Also due to the Great Kantō Earthquake in 1923, many residents from downtown Tokyo were encouraged to move to this area which helped push forward its modernisation and development as a city. During the time of WWII, Japan’s prominent aircraft and engine manufacturer Nakajima Aircraft Company establishes an engine factory on their Musashi production site. Known to be one of the best engine factories in the whole of East Asia, it easily became a target of the bombing and the area suffered severe damages. However, the survivors of the war continued to work together in bringing the city back. Now, the city is livelier than ever, attracting many residents as well as visitors with its unique shops and restaurants, and has also been a big inspiration to fields of literature, art, animation, and manga. Since old times, Musashino city has continued to attract people, bringing happiness and smiles to everyone.

Please use this booklet as a guide and enjoy walking around the city.

Welcome to

Musashino City

A lot of Anime production companies, as well as scenaries used in Anime!

Kichijoji has many live music venues with Jazz, Rock and other genres.

The city has 18 Tangible Cultural Properties, 1 Intangible Folk Cultural Properties, 9 Tangible Folk Cultural Properties, 1 Historic site, and 8 Natural Monuments.

The city has 50 commercial streets including 28 in Kichijoji, 15 in North Mitaka Area, and 10 in Musashisakai.

The Japanese Clover, Purple Gromwell, Chinese Violet Cress, Azalea, Daphne, Daffodil, Cotton Rosemallow, Morning Glory, and Chrysanthemum are the city flowers.

Zelkova, Magnolia and Dogwood are the city trees and flowers.

Table of Contents

Musashino city, a place where people gather to enjoy	4
Special edition: Areas full of Originality	
Kichijoji Area	6
North Mitaka Area	8
Musashisakai Area	10
Exciting! MUSASHINO City	
Experiences	12
Musashino-related People of Culture	14
Manga / Anime	16
Music	18
Halls and Theaters	20
Eat and Drink Markets	22
Eat and Drink Café	24
Different ways to enjoy! One-Day Trips ...	26
Exciting! MUSASHINO City	
Souvenirs	28
Farmers Markets	30
Events	32
Visitor's Information	
Bus Tables	34
Recommended Routes	36
Available Services Car Rentals, Bicycle Rentals, Coin Lockers, Currency Exchange, Stroll Rentals	
Free Wi-Fi	37

Here is the Rikubashi, a railway overpass built in 1929. A popular spot for children and railway lovers. You may be able to see Mt. Fuji during winter.

Recommended Routes (Detail in p.36)

- ① → Good-luck route with Japanese gods of fortune
- ② → Nature route with water and greens
- ③ → Stroll route through Inokashira Park and Kichijoji

Use QR codes below for more detailed maps of each area!
 ※ Can be viewed only from smartphone and computer

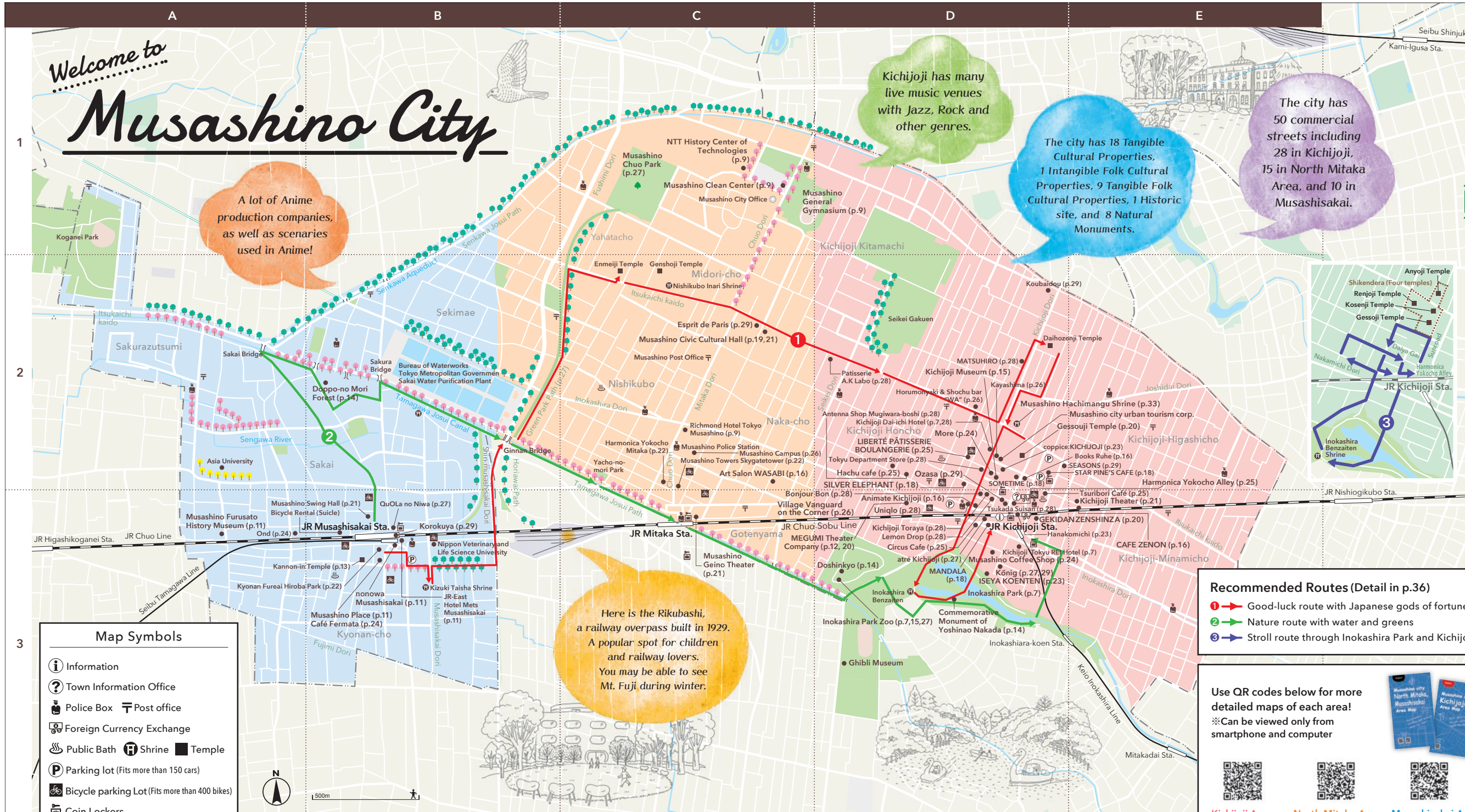
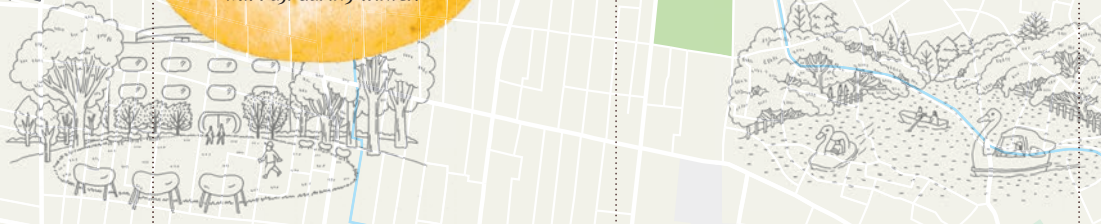
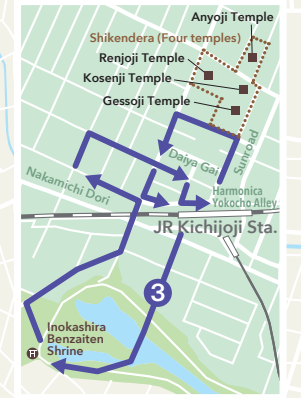

 Kichijoji Area


 North Mitaka Area


 Musashisakai Area

Map Symbols

- Information
- Town Information Office
- Police Box Post office
- Foreign Currency Exchange
- Public Bath Shrine Temple
- Parking lot (Fits more than 150 cars)
- Bicycle parking Lot (Fits more than 400 bikes)
- Coin Lockers



KICHIOJOI

Kichijoji Area

Only 15 minutes to Shinjuku and Shibuya. But no need to go downtown because you can find everything in Kichijoji. Fashion, food, Japanese culture, you name it! Even a big park too. That's how awesome Kichijoji is!



About the area

The area consists of various attractions such as fashion, gourmet, culture as well as nature. What makes this area so convenient is that you can find all different kinds of activities, whether it be eating, shopping, or even relaxing in nature, within just 300 meters from the station. This is one of the biggest reasons as to why this city has been ranked as one of the most "desirable city to live in" for so many years. Not only that but its unique culture so full of originality has always been a big inspiration to many creators in different fields such as anime or music, making the area somewhat the core of Japanese subculture.

1. Inokashira Park
2. Motomachi Street
3. Kichijoji Station North Exit
4. Inokashira Park Zoo/Sculpture Museum; a prototype of the existing peace statue at Nagasaki Peace Park
5. Anime Wonder Land
6. Statue of Hanako - in front of the North Exit

History

Its development as commercial and residential area started sometime between the Edo and the Meiji period. One of the biggest factors in its growth was when a huge fire incident occurred in the central part of Tokyo which forced residents as well as the town's temple, then called "Kichijoji", to evacuate. In search of a new place to live, people started settling along Itsukaichi Kaido Road (a road that connects Kichijoji and Koenji) and named the area after their temple. Later in 1899, Kichijoji Station first opened which made a significant push to area's development as a city. Also in 1923, due to the Great Kanto Earthquake, many people moved out of central Tokyo and settled around this area which urged urbanization. After WWII, an underground economy started rising around the station which is also what helped the city become the big shopping district it is today.

Recommended Spots



↑ Entrance of Sun Road.
← Motomachi Dori (left) and Dia-Gai (right).

Within the walking distance from the station!
Shōtengai

Not only big department stores but Shōtengai, meaning Japanese shopping streets, are also what makes Kichijoji so attractive. There is the 300 meter-long shopping arcade called "Sun Road" right in front of Kichijoji Station North exit. There is also "Daiya Gai", a street where popular local delis gather, and then "Harmonica Yokocho", an narrow alley which takes you back to old traditional Japan. There's more. "Heiwa Dori", a street with beautiful trees to accompany you with, and "Nakamichi Dori" where you can find a lot of unique, original stores. They are all close from each other yet each has its own type of atmosphere.

The stores in these streets, along with the big shopping malls, are what supports the local community while attracting visitors from many places.

Enjoy the walk through shopping streets

Japan's very first suburban park, opened about 100 years ago Inokashira Park

An urban oasis surrounded by houses and shopping streets. Park's pond is also famous for its swan-shaped boats that offer families and couples a relaxing ride through the scenery. There is also a zoo so you can easily spend a day.

MAP D-3 | 1-18-31, Gotenyama, Musashino-shi Phone: 0422-47-6900
Open all year around. [Access] 5 minutes walk from Kichijoji Station Park Exit



Beautiful trees will help you relax!

Also known for cherry blossoms and autumn leaves.

Musashino City Visitor's Guide

A zoo in one corner of Inokashira Park! Inokashira Park Zoo



There is also a guided tour (no reservation necessary)

Inokashira Park Zoo is divided into a zoo area and an aquatic life park, together covering roughly 35,000 square meters, exhibit about 170 species and 4,000 animals. The park contains a botanical garden, exhibition hall, sculpture museum and an aquatic life house, among other attractions. The main attractions are the exhibits that allow petting and observing the animals closely.

MAP D-3 | 1-17-6 Gotenyama, Musashino-shi Phone: 0422-46-1100 Open: 9:30-17:00 (Inokashira Park Zoo is divided into a zoo and an aquatic life park. After 16:00 visitors can no longer go between the zoo and the aquatic park.) Park hours for the Monday before New Year's are subject to change. Please refer to the HP calendar for exact details.

Accommodations



Also has a bowling alley! Kichijoji Daiichi Hotel

MAP D-2 | 2-4-14, Kichijoji-honcho, Musashino-shi Phone: 0422-21-4411 [Access] 5 minutes walk from Kichijoji Station North Exit



Only two minutes from the station! Kichijoji Tokyo REI Hotel

MAP D-3 | 1-6-3, Kichijoji-minamicho, Musashino-shi Phone: 0422-47-0109 [Access] 2 minutes walk from Kichijoji Station Park Exit

Zzz...

This Athletic Stadium was used for rugby games at Japan's National Sports Festival



North Mitaka Area

Tamagawa Josui Canal, along with a beautiful walking trail, runs between Musashino city and its next-door neighbor Mitaka city. A lot of relaxing sceneries as well as municipal government offices and cultural/sports facilities. It is where the heart of Musashino city lies.



About the area

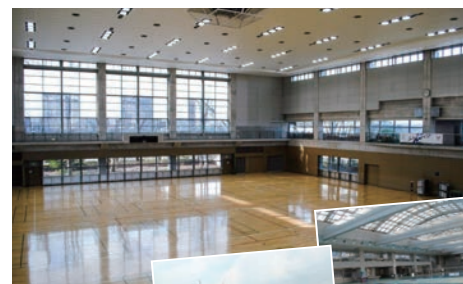
Major facilities that support residents' everyday lives are concentrated in this area; such as the city hall, the police station, health care center, cultural hall, central library etc. There is also a swimming pool and a baseball field open for people of all ages. Rotary just outside station's North exit carries monument inscribed with a poem written by Kunikida Doppo, and a World Federation Peace Statue by Kitamura Seibo. The area is rich in nature, giving off a very peaceful and quiet residential atmosphere. Meanwhile, you also see headquarters of big corporation and restaurant chain, as well as animation studios, bringing liveliness to the area.

History

When discussing the history of this area, the Nakajima Aircraft Musashi Factory cannot be left out. Until the conclusion of World War II, the factory was known for making the largest military aircraft engines in East Asia. From 1938 until the end of the war, the area between what is currently Midori-cho and Yawata-cho was occupied by the factory. In 1941, Mitaka Station North Exit was constructed, due to the factory workers' help. Local residents have gotten used to what remains of the factory today as Musashino Chuo Park and the City Hall, which has been altered from its original state.

1. Tamagawa Josui Canal, "Green Road" 2. Musashino Chuo Park 3. Art Salon WASABI 4. Musashino Municipal Athletic Stadium 5. Monument of Kunikida Doppo and her poem 6. Mitaka Station North Exit

Recommended Spots



You can enjoy all kinds of activities.



Everything for everyone! Musashino General Gymnasium

This sports facility has all things combined such as gymnasium, athletic stadium, swimming pool, etc. Some classes also allow walk-ins so you can try out things like yoga or dance classes without any pre-registrations. They also offer group reservations as well as classes limited to those with memberships.

MAP C-1 | 5-11-20, Kichijoji-kitamachi, Musashino-shi Phone: 0422-56-2200 Open: 9AM-9:30PM Closed on 15th every month (*if 15th falls on a weekend, then closing will move to the following weekday). [Access] 25 minutes walk from Mitaka Station North Exit, or 5 minutes walk from Bus Stop #33 "Fuso-dori" on MuBus

Hidden fun for families Musashino Clean Center

A cutting-edge plant for waste management. They also offer tours that do not require pre-reservations. There, you can watch the disposal process through a huge glass window and walk through the floor to learn how waste is being managed. There are occasional events hosted such as "Eco-Marche" and more.

MAP C-1 | 3-1-5, Midori-cho, Musashino-shi Phone: 0422-54-1221 Open: 10AM-5PM Closed on Tuesdays, National Holidays, and for the New Year's Holiday ※Rooftop tour and group tour require reservation. [Access] 25 minutes walk from Mitaka Station North Exit

Their waste-to-energy conversion helps supply energy to city hall and other facilities in the community.



↑ Won the "GOOD DESIGN AWARD" for public facilities in 2017.
→ Rooftop garden fertilized by compost.

Learn all about NTT's telecommunication technology and history! NTT History Center of Technologies

This facility allows you to learn about the history of telecommunication and how the technology developed throughout the years, from telegrams and telephones, to what we now know as internet and cellphones. They offer two kinds of tours: one focusing on history and the other on technology. You can also explore on your own, but the tours are definitely recommended.



↑ More than 1,500 historical materials are displayed.
→ Telephone operator for a day.

MAP C-1 | 3-9-11 Midori-cho, Musashino-shi Phone: 0422-59-3311 Open: 10AM-5PM (with Reservation) ※ Open to public Thursdays and Fridays 1PM-5PM (Entry until 4:30pm). Closed on weekends, holidays and in case of events ※Pre-reservation required for group tours. For more details, visit: <http://www.hct.ecl.ntt.co.jp/> [Access] 25 minutes walk from Mitaka Station North Exit

Receive newly made paper crafts as a thanks for responding to our survey!

Accommodations

Away from the city and relaxing. Richmond Hotel Tokyo Musashino

MAP C-2 | 2-4-1 Naka-cho, Musashino-shi Phone: 0422-36-0022 [Access] 8 minutes walk from Mitaka Station North Exit



Musashino City Visitor's Guide

Musashino City Visitor's Guide

MUSASHISAKAI

Musashisakai Area

A cozy residential area where families and students gather, but it has also been changing rapidly in the last few years particularly due to the development of Musashisakai Station. Many shops and restaurants are concentrated around the station which continue to increase. There are also cultural facilities as well as many universities, also making it known as a very academic, sophisticated area.



About the area

Musashisakai area is where convenience and beautiful nature are both combined. Inside and around the station offers many stores such as "nonowa" or "ItoYokado" where you can find all kinds of items according to your need. There are also many cultural facilities such as Musashino Place or Musashino Swing Hall, as well as universities like Asia University or Nippon Veterinary and Science University, giving a very academic atmosphere to the area. Just a little bit further from the station and it is full of nature where you can find Tamagawa Josui Canal as well as Sakaisanya Green Area (Doppo-no Mori Forest).

History

This was where a house of Matsudaira clan used to exist in Edo period. After completing the construction of Tamagawa Josui Canal, the land where the house used to exist was newly developed into a rice field and named after the surname of clan's vassal "Sakai". In 1889, "Sakai Depot" was opened which is what later became the Musashisakai Station we see today. As the area developed, many educational institutions started to concentrate which is when it started becoming a city of academia. After the war, it was largely developed as a residential area and grew as a suburban commuter town.

1. Musashisakai Station 2. Skip Street (shopping street) 3. Doppo no Mori forest 4. Musashino Swing Building 5. Agriculture Fureai Park 6. Kizuki Taisha Shrine

Recommended Spots



Plenty of shops inside and by the station! nonowa Musashisakai

A shopping facility opened in 2013 after the elevation of the station was completed. It includes supermarkets, pharmacy, grocery stores as well as cafe and restaurants. Try visiting Korokuya market where they sell locally grown vegetables and premium products of Musashino city (Page 28).

MAP B-3 | nonowa Musashisakai, 2-1-28, Kyonan-cho, Musashino-shi Phone: 042-316-4417 (JR Chuo Line Mall Co., Ltd.) Open hours may vary depending on stores. No regular closing days. [Access] Connected from Musashisakai Station



Learn and relax Musashino Place

Musashino Place is a public facility which functions primarily as a library but also provides spaces for lifelong learning, civic events as well as youth activities. It has been supporting the life and the activities of people of all ages, bringing the community together throughout the years. Its comfortable yet modern design has also been awarded by the Architectural Institute of Japan in 2016.

MAP B-3 | 2-3-18, Kyonan-cho, Musashino-shi Phone: 0422-30-1905 Open: 9:30AM-10PM Closed on Wednesdays (*a holiday on a weekend, then closing will move to the following weekday). [Access] One minute walk from Musashisakai Station South Exit

↑ Connects the South and the North side of the station.
← "Korokuya" sells locally grown vegetables and more.



↑ The landmark of Musashisakai
→ All the floors have a very bright, welcoming atmosphere

Know the history and make walking around the city more fun! Musashino Furusato History Museum

This is where all the knowledge and wisdom of Musashino city can be found. It also functions as national archives which is rather rare in the country. This facility offers the opportunity to learn about the evolution of Musashino city from the primeval age to now as well as about the community through its permanent exhibition and a themed exhibition hosted four times a year.

Accommodations



Conveniently located next to the station! JR-East Hotel Mets Musashisakai

MAP B-3 | 2-1-8 Kyonan-cho, Musashino-shi 0422-32-5111 [Access] 1 minute walk from Musashisakai Station South Exit

Please refer to P. 24 for more information about cafes on the first floor.

Musashino City



The museum collects, maintains and exhibits valuable historical/cultural material.

MAP A-3 | 5-15-5, Sakai, Musashino-shi Phone: 0422-53-1811 Open: 9AM-5PM Closed on Fridays and holidays. [Access] 12 minutes walk from Musashisakai Station North Exit ※ For bus, get off at a stop called "Musashino Museum of History" on MuBus (Sakai West Route)

222...

Experiences

Number Details

- 1 Who it is open to (Japanese / Foreigners)
- 2 How to participate
- 3 Fee
- 4 Available days
- 5 Duration
- 6 Venue
- ★Please contact them directly for further details.

Eating and shopping are not the only entertainment you can find in Musashino city. There are many programs as well as events that allow you to really learn and experience Japanese culture which is available to everyone.



Both "Awa Odori (traditional dance)" and "Samurai" experience allow recording so you can capture the moment!

The Japanese Entertainment

Japanese festival workshop presented by Takarabune

MAP D-3
Kichijoji

Experience "Awa Odori"

Contact ☎0422-27-1395 Next Local Co., Ltd.
✉event@next-local.co.jp

- 1 Japanese and Foreigners
- 2 Requires reservation in advance
- 3 8000 yen+
- 4 On request (5-10 participants at once)
- 5 One hour
- 6 MEGUMI Theater Company's Studio 2-35-10, Kichijoji-honcho, Musashino-shi [Access] 5 minutes walk from Kichijoji Station North Exit



Hosted by "Takarabune", Japan's first and only professional Awa Odori dance group based in Musashino city. Why not give it a try? Have fun while also learning the Japanese traditional dance!

"SAMURAI FIGHT!" by MEGUMI Theater Company

MAP D-3
Kichijoji

The "Samurai" Experience

Contact ☎0422-27-1395 Next Local Co., Ltd.
✉event@next-local.co.jp

Hosted by MEGUMI Theater Company (P.20). After watching their powerful show using swords, participants are offered an opportunity to try taking part in some of the performances.

- 1 Japanese and Foreigners
- 2 Requires reservation in advance
- 3 20,000 yen+
- 4 On request (5-10 participants at once)
- 5 One hour
- 6 MEGUMI Theater Company's Studio 2-35-10 Kichijoji-honcho, Musashino-shi [Access] 5 minutes walk from Kichijoji Station North Exit



The Japanese spirit

Zazen session at Eikenzan Kannon-in Temple

Experience "Zazen"

MAP B-3
Musashisakai

Contact ☎0422-31-8482



"Let's train ourselves together", says the head priest of the temple. Zazen is a meditative discipline and a practice of the Zen Buddhist tradition. They usually use a wooden stick to slap on the shoulders as a way to remedy lapses of concentration, but this will not be used on the participants. 90 minutes of training together with the priest will definitely be a one-of-a-kind experience. You can also experience more trainings, which will require reservations.



- 1 Japanese and Foreigners
- 2 No reservation required
- 3 Donation
- 4 Every morning
- 5 5:30AM-7AM (90min.)
- 6 Kan non-in Temple

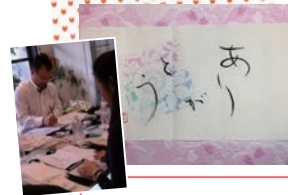
2-4-8, Kyonan-cho, Musashino-shi [Access] 3 minutes walk from Musashisakai Station South Exit

The Japanese culture

Japanese calligraphy class by Ogetsu Kichijoji

Experience Japanese calligraphy (Edo writing) and painting

Contact ☎080-5023-6526
✉o-getsu.shodou@ezweb.ne.jp



Edo writing calligraphy invented by calligrapher Ogetsu. Writing the Japanese calligraphy with black ink and a brush on a traditional handmade paper.

- 1 Japanese and Foreigners
- 2 Contact directly to make reservation (must have 3 persons or more)
- 3 3,000 yen (Plus cost for class materials 2,000 yen)
- 4 On request
- 5 90 minutes
- 6 Kichijoji area

Shawl making class by Ogetsu Kichijoji

Experience converting traditional Obi belt into a shawl

Contact ☎080-5023-6526
✉o-getsu.shodou@ezweb.ne.jp



※ Patent pending

Obi is a belt or a sash that are used to keep Japanese traditional dress (kimono) in place. Here, they offer the experience of turning an Obi into a shawl. They give detailed instruction so beginners don't need to worry either.

- 1 Japanese and Foreigners
- 2 Contact directly to make reservation (2 persons or more)
- 3 15,000 yen (Plus cost for class material 3,000 yen)
- 4 On request
- 5 3 hours
- 6 Kichijoji area

Kichijoji

"Furoshiki" class by Mihoko Tsurusaki Experience the Japanese wrapping cloth "Furoshiki"

Contact ☎080-1049-3344
✉hospit.english@gmail.com

Certified instructors from Japanese Furoshiki Association!



- 1 Japanese and Foreigners (English speaking instructors available)
- 2 Reservation required, contact directly
- 3 4,000 yen
- 4 On request (must have 2 persons or more)
- 5 100 minutes
- 6 In Kichijoji/Musashisakai area

Furoshiki is a traditional Japanese wrapping cloth. They can be used to carry wine or even as a shopping bag, and you can learn how!

Musashino is a perfect mixture of nature and the city with diverse attractions. Being able to experience Japanese culture is one of them. Through these events and classes, you will be able to see a new aspect of Japan's tradition and create a great memory for your trip.



Members of Takarabune

Exciting! MUSASHINO City

Musashino-related People of Culture

Writers, composers and critics who had connections to the city

Known for its well-preserved nature, Musashino city had come to be an very inspirational environment for many artists, poets and writers from the end of the 19th century to the present. It was where one of Japan's most well-known writers and artists gathered to create their work. There are monuments that represent the ties they had with this city, so take a look as you walk.

At the foot of Sakura Bridge and Mitaka Station North Exit, you will find a monument of Kinikida Doppo inscribed with his poem.



← Monument at Mitaka Station North Exit.

One of his most famous songs is being played at Mitaka Station as train departure signal.

Musashino City Visitor's Guide

A novelist in the late 19th century. He loved the scenery of the Musashino area.
Doppo Kunikida (1871-1908)

Doppo who was also a naturalist used to portray the beauty of Musashino's scenery in his works. Senya Koen Park, one of the few forests he loved, still remains in the city and is now known as "Doppo-no Mori Forest" (Doppo's forest).

Doppo no Mori Forest
Musashisakai MAP B-2 | 4-5 Sakai, Musashino-shi [Access] 16 minutes walk from Musashisakai Station North Exit



Composer with many works of children's song
Yoshinao Nakada (1923-2000)

Yoshinao Nakada lived in the Mitaka and Musashino area after the war. One of his most famous songs was born while he was taking a walk through the area. His songs have long been loved by Japanese people, and there is also a monument of him inscribed with music notes of his work.

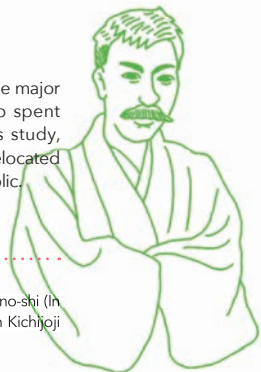
Monument of Yoshinao Nakada
Kichijoji MAP D-3 | In Inokashira Park (1-18-31 Gotenyama, Musashino-shi) [Access] 5 minutes walk from Kichijoji Station Park Exit



Poet who was based in Kichijoji
Ujo Noguchi (1882-1945)

Ujo Noguchi was regarded as one of the three major lyricists of Japanese children's songs. Ujo spent about 20 years of his life in Kichijoji. His study, referred to as "Doshinkyō", has now been relocated to Inokashira Park Zoo and is open to the public.

Doshinkyō (Ujo Noguchi's study)
Kichijoji MAP D-2 | 1-17-6 Gotenyama, Musashino-shi (In Inokashira Park Zoo) [Access] 10 minutes walk from Kichijoji Station Park Exit



There is also a monument of him at the western bank of Inokashira Pond.



Named the Harmonica Yokochō in Kichijoji
Katsuichiro Kamei (1907-1966)

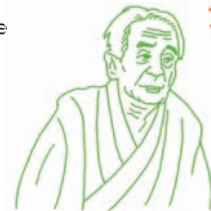
A Japanese literary critic who lived in Musashino city. He was close to novelists including Osamu Dazai. It is said that he named the alley known as "Harmonica Yokochō" in Kichijoji simply for the fact that the area resembled the mouthpiece of a harmonica.



Kichijoji
While keeping the nostalgic atmosphere, their culture also keeps evolving.

A poet who helped protect city's nature
Mitsuharu Kaneko (1895-1975)

Kaneko was a poet known for his rebellious spirit. In 1966, he established an organization to protect the Tamagawa Josui Canal with his other poet friends, working to preserve nature's city.



Kichijoji
Tamagawa Josui Canal was recognized as a national historic landmark in 2003.



Yoshimoto Creative Agency

A Japanese famous comedian and an Akutagawa Award-winning novelist
Naoki Matayoshi (1980-present)

Starting out as a comedian in his 20s, Matayoshi lived in a tiny apartment with no bath. His humble life in Kichijoji is reflected in his award-winning novel "Hibana" where a lot of the area's familiar scenery is being depicted.



"Hibana", the award-winning novel of Matayoshi

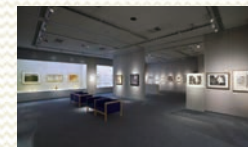
Musashino Coffee Shop (P.24) also shows up in the book!

Musashino City Visitor's Guide

Column

Learning more about writers, composers, and critics who had strong ties to the city

There are many spots in Musashino city where you can see and feel the connection Japanese artists had with the area. Kichijoji Art Museum, for example, carries exhibition rooms dedicated to two world famous sculptors: Yoza Hamaguchi and Hideo Hagiwara who also loved the city of Musashino. In Inokashira Park Zoo's sculpture exhibitions, there is a relocated studio of Seibo Kitamura who made the peace statue in Nagasaki. Paying attention to those details may be another way to enjoy the city.



Kichijoji MAP D-2 | coppice KICHIOJI Building-A 7F, 1-8-16 Kichijoji-honcho, Musashino-shi Phone: 0422-22-0385 Open: 10AM-7:30PM Closed on last Wednesday of every month. [Access] 5 minutes walk from Kichijoji Station North Exit



Kichijoji MAP D-3 | 1-17-6 Gotenyama, Musashino-shi (Inside Inokashira Park Zoo) Phone: 0422-46-1100 Open: 9:30AM-5PM (Entry until 4PM) Closed on Mondays (If it falls on a holiday, closing will be moved to the following weekday). [Access] 10 minutes walk from Kichijoji Station Park Exit

More than 2,500 art pieces stored
Kichijoji Museum

Works of artists who had ties to Musashino city, as well as other Japanese artists, are being exhibited at this museum. It also functions as a civic gallery. Entrance fee for the regular exhibition is 100yen, and for special exhibition it is 300yen.

Find the studio of
Seibo Kitamura Inokashira Park Zoo Sculpture Exhibition

Sculpture museum inside the Inokashira Park Zoo. The prototype of the famous peace statue in Nagasaki is also being displayed. Entrance fee is 400yen (including both the museum and the park zoo).

Exciting! MUSASHINO City

Manga / Anime

Musashino city has always had a strong connection with manga and anime. A lot of manga writers and editorial companies, as well as animation studios, are based in the area. Its scenery also appears in many manga and animation works.



Anime related Cafes and Shops



↑ Taco rice with a face of Mee-tan the cat (1,080 yen).



↑ Food is delicious, and definitely worth taking pictures!

A gallery cafe for movies and anime Art Salon WASABI

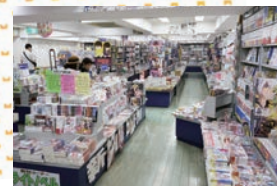
Offers original menus with characters created by an artist based in Kichijoji. They also sell fun items only accessible at this cafe so definitely check it out!

North Mitaka MAP C-2 | 2-26-4 Naka-cho, Musashino-shi Phone: 0422-57-4130 Open: 11AM-6PM Closed on Sundays and Mondays. [Access] 7 minutes walk from Mitaka Station North Exit

A must go cafe featuring manga and art CAFE ZENON

A nice stylish cafe with a cozy, spacious atmosphere. It may seem like just an ordinary cafe but there are manga related tricks here and there. They also host monthly exhibitions with diverse range of creators where you can enjoy some art.

Kichijoji MAP E-3 | 2-11-3 Kichijoji-minamicho, Musashino-shi Phone: 0422-29-0711 Open: 11AM-11PM (Last Order at 10PM for food, and 10:30PM for drinks) Open all year around. [Access] 5 minutes walk from Kichijoji Station North Exit



↑ The 3rd floor comic area has the best assortment in Kichijoji.



©Kazuhiro Shimamoto / MOVIC Illustrated by Shuu Takita

↑ You can order at the cafe "Gratte" ※ Sample photo

Sun Road shopping district's local bookstore Books Ruhe

Located in Kichijoji, the bookstore is connected with local animation studios and cartoonists and boasts signed 'Shikishi' as well as book covers with Kin Shiotani illustrations. The store also hosts exhibitions displaying the works of local cartoonists.

Kichijoji MAP D-2 | 1-14-3 Kichijoji-honcho, Musashino-shi Phone: 0422-22-5677 Open: 9:00-22:30 Open throughout the year (except New year's day) [Access] 5 minutes from Kichijoji Station North Exit

Check out the seasonal events and fairs also Animate Kichijoji PARCO

A shop for manga and anime lovers! They sell a wide range of things like manga, light novels, character-themed products including figure models, games, CD, and DVDs.

Kichijoji MAP D-3 | Kichijoji PARCO 7F, 1-5-1, Kichijoji-honcho, Musashino-shi Phone: 0422-22-5059 Open: 10AM-9PM ※Cafe service: 11AM-8:30PM (Last Order till 8:15PM) Closed when Kichijoji PARCO is closed. [Access] 2 minutes walk from Kichijoji Station North Exit

The event started in 1999 to celebrate the 100th anniversary of Kichijoji station's opening. Since then, it has been held every autumn, for few weeks, in which creators of anime and manga who have a strong connection to Musashino city come together. They have toy markets, anime screening and more!



A big collaboration of the city, manga writers and animation studios Anime Wonderland

Major production companies

Bringing dreams to children around the world Tatsunoko Production

An animation production company loved by all generation. Established in 1962 and moved from Kokubunji to Musashino city in 2013.

[Major Works]
"The Genie Family"
"Kagaku Ninja-Tai Gatchaman"
"Time Bokan Series"
"Kiratto Pri ☆ Chan"
※ Now airing on TV Tokyo



©TATSUNOKO PRODUCTION

The CEO is a former editor of "Weekly Shōnen Jump" Coamix

Mostly works on character-related business and magazine edits. They aim to explore the cultural aspect of manga as they produce a wide range of contents. Established in 2000.

[Major Works]
"Angel Heart"
"Fist of the North Star"
"Monthly Comic Zenon"
"Bonolon the Forest Warrior"

"Fist of the North Star"
©武論尊・原哲夫/NSP 1983
"エンジェル・ハート 2ndシーズン"
©北条司/NSP 2010



There are many more studios and companies in the city!

Animes that depict Musashino city

Many sceneries from Musashino city is being used in manga or anime. Some were chosen as one of the most "desirable anime sceneries to visit" in an online vote held by the Anime Tourist Association.

North Mitaka **Kichijoji** **Musashisakai**



©SHIROBAKO 製作委員会

SHIROBAKO

An animated series mainly focusing on the animation industry. Sceneries of Musashisakai Station and Kichijoji can be seen a lot within their stories.



©Nitroplus/そにアニProject

SoniAni

Story about the daily life of protagonist Super Sonico who lives around Kichijoji.

Visit different sceneries from anime!



Musashino city's richness in nature is great for creative inspiration. In the Japanese anime "Yobarete Tobidete! Akubi-chan" you can see an Inokashira park inspired scenery. My dream is to open "Tatsunoko Land" named after my father's company.



Navigator

Character Designer Suzuka Yoshida

A daughter of Tatsuo Yoshida, who established Tatsunoko Production. She designed Akubi girl. A resident of Musashino city.



● sceneries from "SHIROBAKO." ● sceneries from "SoniAni."

Exciting! MUSASHINO City

Music

Ever since Jazz cafes became a thing in this area in the 70s, the city has had a strong connection with music. There are many live music venues where you can enjoy listening to different bands, as well as music events hosted by Musashino city. Definitely worth a visit!

Performances on shopping streets, park, live music venues and more!

Music fills the city during Japanese holiday Golden week!

Kichijoji Music Festival

Musashino city's iconic music festival which is also part of the "Kichijoji Welcome Campaign." Stages for this festival is not limited to one place, and you will see live performances everywhere whether it is inside a venue, shopping street, or outside just in front of the station! Try making several stops for some Jazz, music concerts and many more fun while walking around the city.

Kichijoji [Contact] 0422-23-5900 (Musashino city urban tourism corp.)



Have some good food and enjoy casually.



A fun stage with a mirror on the ceiling!



Mesmerized by their dynamic performances Musashi Sakai JAZZ SESSION

A Jazz festival held every February at Musashino Swing Hall (P.21). There will be performances by local amateur bands as well as professional musicians who have a strong tie to the area. Indulge yourself with some good, live music and just feel the beauty of Jazz! Matinee performances are free. Soiree performances require reservations in advance.

Musashisakai [Contact] 0422-23-5900 (Musashino city urban tourism corp.)



It is a must go for all Jazz lovers! SOMETIME

A Jazz club opened by lori Noguchi who played a big part in instigating the subculture boom in Kichijoji. Opened for more than 40 years now, its appearance is still the same, giving off a very antique vibe that almost looks like a scene of a movie.

Kichijoji MAP D-2 | 1-11-31, Kichijoji-honcho, Musashino-shi Phone: 0422-21-6336 Open: 11AM-11:00PM Open all year around. [Access] 3 minutes walk from Kichijoji Station North Exit

Loved by locals since its opening in 1978. SILVER ELEPHANT

They host various shows and events such as live performances by progressive bands or "SILVER ELEPHANT connection" which is a popular event where different bands come together to entertain the audience.

Kichijoji MAP D-2 | 2-10-6 Kichijoji-honcho, Musashino-shi; Floor B1 Phone: 0422-22-3331 Open hours vary depending on events. No regular closing. [Access] 5 minutes walk from Kichijoji Station North Exit

Had their 8th contest in 2017.



Venue: Musashino Community Center (small hall)

Held every four years to decide the world's best organ player! International Organ Competition Musashino-Tokyo

It is a world-class competition for organ players held in Musashino city! After going through a very difficult audition process, the world's top organists gather and perform to claim the best organ player in the world. Tickets to the competition as well as the preliminaries are available to the public. There is also some bonus performances of award-winning organ players.

North Mitaka MAP C-2 | Musashino Civic Cultural Hall 3-9-11 Naka-cho, Musashino-shi Phone: 0422-54-8822 Closed on Wednesdays (if it falls on a holiday, then it will be closed the next day) [Access] 13 minutes walk from Mitaka Station North Exit

Ever since the 1960s when a very first Jazz cafe opened in Kichijoji, the area has been known as "city of music" offering different genres of music. It grew, throughout decades, as a community where music lovers come together and connect. Music has the power to bring people together, and you are definitely invited to come to join the community.



Navigator

Representative Director of company Mugi Mariko Noguchi

After taking over her father lori Noguchi's business, she now runs multiple restaurants and cafes in Kichijoji as well as taking part in organizing the Kichijoji Music Festival.

Stage so close you cannot help but engage in the performances!



An old live music venue, loved for more than 40 years. MANDALA

You can enjoy all kinds of live music performances here along with comedy show or even public reading, where artists from all genres gather. A lot of food and drinks to choose from as well.

Kichijoji MAP D-3 | 1-5-2, Kichijoji-minamicho, Musashino-shi; Floor B1 Phone: 0422-48-5003 Open: 10AM-3PM / 4PM-12Midnight Open all year around. [Access] 2 minutes walk from Kichijoji Station Park Exit

Try their original curry while watching their live shows!



Two-story structure with an open ceiling! STAR PINE'S CAFÉ

A nice spacious interior where you can enjoy different kinds of food as well as seasonal cocktails along with some live music, dance, acting and other kinds of performances.

Kichijoji MAP D-2 | 1-20-16, Kichijoji-honcho, Musashino-shi; Floor B1 Phone: 0422-23-2251 Open hours vary depending on events. Open all year around. [Access] 5 minutes walk from Kichijoji Station North Exit

Halls and Theaters

Musashino city provides many opportunities to appreciate Japanese culture and art through top-notch performances and exhibitions. It is also a home to numerous theater companies that offer different programs and stage performances every day.



Theater Companies

Their rehearsal room is also in Kichijoji!



They perform all over Japan working to perpetuate the culture of theater.

Where unique individuals gather to perform MEGUMI Theater Company

The company has been performing for more than 30 years mainly focusing on "Jidaigeki" (samurai dramas). Their skillfully beautiful sword battle is definitely a must-see. They also have shows in Kichijoji Theatre (P.21) so check it out.

Kichijoji MAP D-3 | 2-35-10, Kichijoji-honcho, Musashino-shi
Phone: 0422-20-5539

Goodwill Ambassador of Musashino city urban tourism corp.! GEKIDAN ZENSHINZA

A theater company founded by kabuki actors in 1931. Based in Musashino city, the company has been working to spread the art of theater throughout Japan. They are also locally active, performing at Musashino Cherry Blossom Festival as well as offering workshops at a local university and public reading classes for residents.

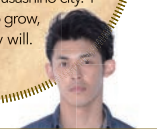
Kichijoji MAP D-3 | Zenshinza Building 2-4-3, Kichijoji-minamicho, Musashino-shi Phone: 0422-49-2811



Play based on auspicious gods of Musashino: "MATSURI"

↑ A story of Izo Okada, one of the most feared samurai of the Edo period.

Performance, when polished, becomes more and more vibrant. It is that vibrancy that moves people. I want to continue to polish and explore new aspects of performing. It is a never-ending journey, and there is no right answer. It is full of possibilities, which is what I also see in Musashino city. I want to continue to grow, just like this city will.



Navigator

an actor from MEGUMI Theater Company
Otaya Shinmiya

He joined the company in 1995 and has been playing important roles in all major performances of MEGUMI Theater Company.

Musashino city's autumn tradition Kichijoji Noh Theater Performance



A fantastic stage with balefires.

A theater performance held every autumn since 1986. It features an old Japanese tree (zelkova) from Gessoji Temple as background which really ties the performance together. Enjoy watching the Japanese traditional form of art.

Kichijoji MAP D-2 | Gessoji Temple 1-11-26, Kichijoji-honcho, Musashino-shi
※ Regarding the event please contact: 0422-23-5900 (Musashino city urban tourism corp.)

Facilities



↑ Renovated in 2017.

↳ They have both a big hall for multi-purpose (above) and a small hall for music concerts (below).

City's creative hub for culture and art Musashino Civic Cultural Hall

This center offers a wide range of programs such as concert, musical, ballet, theater and more. They carry both big and small size performance hall, as well as rooms for exhibitions and Japanese tea ceremony. The place is often used for school and amateur group performances. They are also known for having a pipe organ which is rather rare in Japan.

North Mitaka MAP C-2 | 3-9-11, Naka-cho, Musashino-shi Phone: 0422-54-8822 Open: 9AM-10PM Closed on Wednesdays (If the day falls on a holiday, closing will be moved to the following weekday). [Access] 13 minutes walk from Mitaka Station North Exit

A lovely Japanese-taste structure Musashino Geino Theater

They have a small theater hall on the 3rd floor which can hold up to 150 people where you can really immerse yourself in the performances very close to the stage. On the 2nd floor, they have a small hall which can be used for multi-purposes such as exhibitions or lectures.

North Mitaka MAP C-3 | 1-15-10 Naka-cho, Musashino-shi Phone: 0422-55-3500 Open: 10AM-11PM Closed on Wednesdays (If the day falls on a holiday, closing will be moved to the following weekday). [Access] 1 minute walk from Mitaka Station North Exit



↑ The stage has a unique structure particularly for puppet theater to control the marionettes.

Small, but loved by performers Kichijoji Theater

They offer a variety of performances mainly focusing on theater and dance. The stage also has a flexible structure to fit multi-purpose use and has a raked floor inclined for the audience to be able to fully enjoy the performance from any seating.

Kichijoji MAP E-3 | 1-33-22 Kichijoji-honcho, Musashino-shi Phone: 0422-22-0911 Open: 9AM-10:30PM Closed on last Tuesday of every month (In case the day falls on a holiday, closing will move to the following weekday). [Access] 5 minutes walk from Kichijoji Station North Exit



↑ They also have adjoining rehearsal rooms.

↳ The theater carries 189 seats in total.

Powerful soundproofing for powerful music Musashino Swing Hall

A dual structured hall provides perfect soundproofing, allowing dynamic music concerts as well as events to take place. They also have adjoining meeting rooms as well as multi-purpose space used for photo and painting exhibitions or parties.

Musashisakai MAP B-3 | 2-14-1 Sakai, Musashino-shi Phone: 0422-54-1313 Open: 9AM-10PM Closed on Mondays (If the day falls on a holiday, closing will be moved to the following weekday). [Access] 2 minutes walk from Musashisakai Station North Exit



↑ The hall is inside the Swing Building and 2 minutes walk from Musashisakai station



Exciting! MUSASHINO City

Eat and Drink Markets

There are many markets that open over the weekend with popular local stores selling their specialties. It would be a fun way to spend a day going through different markets.



There are also fun games for children such as flying bingo.



You will find a wide range of products offered. Great for some family fun.



Vietnamese and Nepali buffet is available too.

On a winter night

Musashino Illumination

During every winter season, from November to mid-February, areas in front of Kichijoji Station, Mitaka Station and Musashisakai Station are lit up with beautiful lights. On the day of the light-up, they have live-music performances to celebrate.



Kichijoji Station



Mitaka Station North Exit



Musashisakai Station

Enjoy the morning of Musashisakai! Sakai Marché

Popular local bakeries and cafes gather here. It will be a nice way to start the day, with freshly baked bread and coffee with live music of the violin.

Musashisakai MAP B-3 | [Venue] Kyonan Fureai Square Park ※In front of Musashino Place (2-3, Kyonan-cho, Musashino-shi) [Host] The committee for activating Musashisakai area [Contact] Phone: 0422-31-8825

Open on first Sundays of April through October (except August) ※ Changes can occur to time and location.



Held 4-5 times a year

A community event right by Mitaka station North Exit Towers Marché @ Musashino

More than 30 local restaurants and stores participate in this event. A toy exchanging program is also very popular for families. Usually open from morning to afternoon but in summer they turn into a night market starting in the evening.

North Mitaka MAP C-2 | [Venue] Musashino Towers Skygaterower Southend Public Open space (1-12-10, Naka-cho, Musashino-shi) [Host] Musashino Market Committee [Contact] Phone: 0422-53-1814

The 4th Sunday of every month: 11AM-3PM ※Not held in August

An indoor market fun even on rainy days Mitaka Marché: craftsmens and farmers market

Held at Harmonica Yokocho Mitaka where unique and stylish bars gather. Great for making a casual stop. They offer freshly baked bread, quiche as well as craft items.

North Mitaka MAP C-2 | [Venue] Harmonica Yokocho Mitaka (Shinwa Building 1-5-8, Naka-cho, Musashino-shi) [Host] Video Information Center [Contact] Phone: 0422-21-8019

See, buy, and eat to enhance the morning time

On the 3rd Sunday of every month: 7:00-10:00

Start your Sundays early!

HALF-DAY TRIP

~ Some morning-fun in Musashino city ~

Rise and Shine! Here is a way to enjoy your morning to the fullest.

AM 7:00



"Harmonica Yokocho Morning Market" is held on the 3rd Sunday of every month starting at 7AM. A lot of the stores start to close by 9:30AM...!

Full of "Delicious & Fun" Harmonica Yokocho Morning Market



When looking into the alley, there are about 80 small shops. Fresh vegetables, handmade sweets and miscellaneous goods, and antiques, a variety of unique items are on display. It is also attractive that you can eat limited breakfast at popular restaurants between shopping.

Kichijoji MAP D-3 | [Place] Kichijoji Station North Exit Harmonica Yokocho [Sponsor] Harmonica Yokocho Morning Market Executive Committee [Inquiry] hy.asaichi@gmail.com

Food, sweets, cute items and more! GREENING MARCHÉ

The 3rd Saturday and Sunday of every month: 10AM-5PM ※August only from 10:00 to 18:00



As the name "Greening" suggests, their concept is to enrich yourself in healthy greens. Stores not only from Kichijoji but from all over Japan gather here to offer their best organic goods for an enriching lifestyle.

Kichijoji MAP D-2 | [Venue] coppice KICHIJOSHI Building-A on 1st-Floor concourse (1-11-5, Kichijoji-honcho, Musashino-shi) [Host] coppice KICHIJOSHI [Contact] Phone: 0422-27-2100 (coppice KICHIJOSHI Reception)

AM 9:00



※Art Markets: A lively event where you can enjoy different craft items, and performances. (Pre-registration needed to participate as a stall) Mainly held on Weekends and holidays.

Then, head to the "Art Markets" at Inokashira Park Zoo.

PM 12:00



Trying the popular yakitori from "Iseya" will definitely fill you up! And the day continues!

ISEYA KOENTEN

Kichijoji MAP D-3 | 1-15-8 Kichijoji-minamicho, Musashino-shi Phone: 0422-43-2806 Open: Noon-10PM - Closed on Mondays. [Access] 4 minutes walk from Kichijoji Station Park Exit

Exciting! MUSASHINO City

Eat and Drink Café

A cafe for book lovers



Their homemade pancakes are so popular they're sometimes sold out in a few hours.

There many cafes in the city where you can stop by to relax, including both old-style as well as modern, stylish ones. Here are our recommendation of places. Why not stop by some of them in-between your shopping strolls?

You can bring books from the library to the cafe.

A stylish caded inside Musashino Place Café Fermata

They offer variety of healthy menu including lots of vegetables as well as sweets with no preservatives. Alcohol is also available after 5pm including Rumanian wine and many more. Enjoy some drinks with a book in your hand.

Musashisakai MAP B-3 | Musashino Place 1F; 2-3-18 Kyonan-cho, Musashino-shi Phone: 080-3447-3825 Open: 9:30AM - 9:30PM (Last Order at 9PM) Closed on Wednesdays. [Access] 1 minute walk from Musashisakai Station South Exit

A cozy Jazz cafe



A cozy, log house-like interior.

Cafe at daytime and bar at night Kichijoji More

Indulging yourself in the sound of Jazz and enjoying a sip of coffee or alcohol is the way to go. They also have foods available such as Japanese omelet along with other culturally diverse menus.

Kichijoji MAP D-2 | Sansui Building 2F; 1-8-14, Kichijoji-honcho, Musashino-shi Phone: 0422-21-3007 Open: 11:30AM-12:30MN/ Friday, Saturday, a day before a holiday from 11:00AM to 1:30 at night ※(Lunch hours: 11:30AM-5:30PM) [Access] 3 minutes walk from Kichijoji Station North Exit

They have meals available too!

A retro-style, old school cafe



It is located on the 2nd floor of a building near Inokashira Park.

A famous coffee shop in Kichijoji loved for over 35 years Musashino Coffee Shop

A calm atmosphere with some classical music in the background. They use selective coffee beans and tea which are poured very specifically. Their homebaked sweets are definitely worth trying too.

Kichijoji MAP D-3 | Oigami Building 2F; 1-16-11, Kichijoji-minamicho, Musashino-shi Phone: 0422-47-6741 Open: 11AM-11PM Open all year around. [Access] 3 minutes walk from Kichijoji Station South Exit

Cheese cake is their signature dessert

A collaborative shop born under the overpass



Inside the store where you can feel the warmth of homemade

Play! Rest! Eat! modern style food court Ond

Three cooperative shops by local players: Coffee counter, Tart specialty store, and Deli. It is a new famous Musashisakai spot that has a roasted coffee shop and a craft brewery in the store.

Musashisakai MAP A-3 | Nonomichi Sakai West 3-2-13 Kyonan-cho, Musashino-shi Phone: 0422-38-5500 Open: Public Counter 9:00-21:00 (Saturdays, Sundays, Holidays) 10:00-21:00 Markhol Deli 10:00-20:00 Bateau a tartes 11:00-21:00 Wednesdays

Musashino-shi's first craft brewery in the store

A cafe from Paris opened for the first time in Japan



Their fresh and simple bread is popular. They also have pastries and sweets.

Have a taste of Pari in Kichijoji! LI BERTÉ PÂTISSERIE BOULANGERIE (Tokyo Main Store)

Headquartered in the 10th District of Paris, LI BERTÉ PÂTISSERIE BOULANGERIE is the very first one ever to open outside of France. Their set-meal with some homebaked bread and seasonal vegetables are very popular.

Kichijoji MAP D-2 | 2-14-3 Kichijoji-honcho, Musashino-shi Phone: 0422-27-6593 Open: 9AM-7PM (Last Order at 6:30PM) ※ Lunch hours: 11AM-3PM Closed on New Year's Holiday(Please check the HP). [Access] 6 minutes walk from Kichijoji Station North Exit

1st floor is a shop, 2nd floor is a cafe.

Cafes with living creatures



A cafe for reptile lovers Hachu cafe

Kichijoji MAP D-2 | 4-6-3, Kichijoji-honcho, Musashino-shi Phone: 0422-27-6798 Open: Noon-8PM Closed on Wednesdays. [Access] 8 minutes walk from Kichijoji Station North Exit closing will move to the following Tuesday). [Access] 6 minutes walk from Kichijoji Station North Exit

Total of 40 reptiles including lizards, snakes, and chameleons will be waiting at the cafe to welcome your visit. Seating will cost 540 yen and must order at least one drink per person.



You can eat the fish you catch on the spot! Tsuribori Café Catch & Eat Kichijoji Store

Kichijoji MAP D-3 | Tomifuku Bldg. 2F 1-23-3 Kichijoji-honcho, Musashino-shi 090-1213-6559 Weekdays · Saturdays 12:00-21:00, Sundays · Holy days 10:00-21:00 (Last fishing digging reception: 1 hour 30 minutes before closing) Open throughout the year [Access] 5 minutes walk from Kichijoji Station North Exit

Recommended for those who want to enjoy fishing with their children and girlfriends. Fishing fee is 1500 yen per hour, 700 yen for 30 minutes extension.

Fascinating Night Spots

Introducing you some of the most popular night spots in Musashino city!

Started out as an underground economy after the war Harmonica Yokochō

A narrow, hidden alley clustered with almost 100 bars and stores. Many shoppers stop by during the daytime, and at night it is lively with people enjoying their drinks under the lit-up lights.

Kichijoji MAP D-3 | 1-chome, Kichijoji-honcho, Musashino-shi [Access] 1 minute walk from Kichijoji Station North Exit



Not knowing where you might end up that night is the fun of this alley.

Dive into a world of fantasy and re-charge yourself with some fun! Circus Cafe

Immerse yourself in a fun show-pub. 5,500 yen includes the show as well as 2 hours of all-you-can-drink (with snacks). For more fun, the charge will be 1,000 yen for every 30 minutes. Reservation is required so make sure you call or e-mail them in advance!

Kichijoji MAP D-3 | FS Building 4F; 1-1-9, Kichijoji-minamicho, Musashino-shi Phone: 0422-24-9601 (Reception hours: 5PM to Midnight) Main shows start at 7PM and 10PM ※Reservation required. Closed on Monday and Tuesday. [Access] 2 minutes walk from Kichijoji Station Park Exit



Performances filed tears and laughter.

Different ways to enjoy!

~ A day in Musashino city ~

ONE-DAY TRIP

What kind of day do you want to spend? Pick a plan according to your liking, and enjoy Musashino city to the fullest.

Manga & Anime lovers Going Otaku



10:00

Musashisakai

Visit the holy lands of manga and anime! (P.17)

Check out sceneries from "SHIROBAKO" and "SoniAni."



Nice retro interior!

Enjoy the Gorō approved spaghetti!

A little cafe seen in the manga "Kodoku no Gourmet". The main character Gorō Inogashira prags about this spaghetti in the story!

☉ Dining and Bar Kashiyama



15:00 Kichijoji

Hopping from one anime shop to another!

Try finding rare anime goods. There are two stores in Kichijoji that all anime and manga lovers are obsessed with!

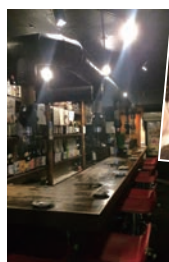


Animate Kichijoji (P.16)



ⓑ "Village Vanguard on the Corner" Kichijoji PARCO

Their Horumonyaki is to die for!



☉ Horumonyaki & Shochu bar "WA"

19:00 Kichijoji

Cheers to all the manga creators!

In Kichijoji, there are many bars where manga writers go to. In this famous bar called "WA", the walls are covered with manga writers' signatures!

Nature lovers Going Active



Only 500yen for a day

10:00 Musashisakai

Rent a "Suicle" bicycle

Cycling is the best way to enjoy North Mitaka and Musashisakai area. You can rent a bike near Musashisakai Station.

Suicle port Musashisakai Station (MAP B-3)
※Details on P.37



☉ Green Park Path

North Mitaka
Musashisakai

Visit nature and greens!

Enjoy a bike ride from Musashi sakai to North Mitaka Area while making a few stops for some nature!



An Italian restaurant that serves Neapolitan pizza and organic wine

ⓑ Musashino Campus

Don't forget to return your bike at Musashisakai station....

Eating outside under a beautiful sky



Horumonyaki & Shochu bar "WA" | MAP D-2 1-10-22, Kichijoji-kitamachi, Musashino-shi Phone: 0422-23-3320 Open: 5PM-3AM Open all year around./☉ Green Park Path MAP B-2 | 1-Chome, Sekimae, Musashino-shi./ⓑ Musashino Campus MAP C-2 | 2-1-9 Naka-cho, Musashino-shi Phone: 0422-36-6218 Open: 11AM-3PM (Last Order at 2:30PM)/5:30PM-10PM (Last Order at 9:30PM) Closed on Wednesday's Lunch (Dinner is open)./ⓑ Musashino Chuo Park

For a relaxing day Family time



10:00 Kichijoji

Let's start with Inokashira Park!

They have swan-shaped boats!

You can't miss this place if you're in Musashino city. Enjoy a nice relaxing walk.



12:00 Kichijoji

A nice picnic with some food to-go

Get yourself some fresh hotdogs from a sausage shop just by Inokashira Park. You can have a little picnic with nature.

Koenig Kichijoji (P.29)



14:00 Kichijoji

Have fun with the animals at Inokashira Park Zoo

Their souvenir shops have original products too!



Inokashira Park Zoo is full of attractions. Not only is it a zoo but they also have aquatic animals as well as a mini amusement park. It's free for children in elementary school and under!



ⓑ Inokashira Park Zoo

17:00 Kichijoji

Stop for some grocery shopping after a fun day

atré offers a variety of sweets and vegetables. What should we get today? Be careful though, it's easy to lose control!



ⓑ atré Kichijoji

Musashino City Visitor's Guide

Souvenirs

You can find all kinds of souvenirs here in Musashino city, from traditional to new and original. Their local brand called "Musashino Premium" which offers locally grown products is definitely worth checking.

Musashino Super Premium

← A booklet with information on souvenirs from Musashino city. Available at Musashino city urban tourism corp. (MAP D-2).

Musashino Premium is a certified product that represents Musashino-shi with excellent locality, uniqueness and reliability. Among the products that have passed the three-year certification period, 15 products that meet stricter screening standards are certified as Musashino Super Premium.



Check out their revival story



2 The fluffiness is just so addictive! Kichijoji Fries



Tsukada Suisan
Kichijoji MAP D-3 | 1-1-8 Kichijoji-honcho, Musashino-shi Phone: 0422-22-4829 Open: 9:30AM - 7PM Open all year around. [Access] 2 minutes walk from Kichijoji Station North Exit

4 Cute Kichijoji-like design. Hand-dyed tenugui of swan-shaped boats and elephants.



Can you spot the swan-shaped boats and elephants?

You can find the tenugui towels at SEASONS
Kichijoji MAP D-2 | 1-27-3, Kichijoji-honcho, Musashino-shi Phone: 0422-27-2874 Open: Mon. & Tue. 11:30AM-7PM / Thu. & Fri. 11:30AM-8PM / Sat. & Sun. 11:00AM-7PM Closed on Wednesdays and 1st Tuesday of every month [Access] 10 minutes walk from Kichijoji Station North Exit

6 A long-seller loved for more than 20 years Coffee Daifuku (rice cake)

Koubaidou
Kichijoji MAP D-2 | 2-2-12, Kichijoji-kitamachi, Musashino-shi Phone: 0422-22-6026 Open: 8AM-7PM Open all year around. [Access] 17 minutes walk from Kichijoji Station North Exit



7 Taste of locally grown flour as you bite Musashino Udon

Korokuya Musashisakai Store
Musashisakai MAP B-3 | nonowa Musashisakai EAST; 2-1-35, Kyonan-cho, Musashino-shi Phone: 0422-38-5222 Open: 10AM-9PM / Weekends and holidays 10AM-8PM Open all year around [Access] Inside the same building of Musashisakai Station



9 Sand the cream on the Dacquoise dough! ironeko no te

Kichijoji Dai-ichi Hotel Patisserie infini
Kichijoji MAP D-2 | 2-4-14 Kichijoji-honcho, Musashino-shi Phone: 0422-21-9817 Open: 10:30-19:00 Open throughout the year [Access] 5 minutes walk from Kichijoji Station North Exit



11 Perfect match with rice. Ideal for souvenirs Magical Kichijoji Dried Seasoning Powder with Sakai's red pepper

Korokuya Musashisakai Store
Musashisakai MAP B-3 | nonowa Musashisakai EAST 2-1-35 Kyonan-cho, Musashino-shi Phone: 0422-38-5222 Open: 10:00-21:00 Saturdays, Sundays, and Holidays 10:00-20:00 Open throughout the year [Access] Directly connected to Musashisakai Station



13 Fun to watch, delicious to eat Musashino GEO sable

Patisserie A.K Labo
North Mitaka MAP D-2 | 3-28-11 Naka-cho, Musashino-shi Phone: 0422-38-9727 Open: 10:00-19:00 Wednesdays and Thursdays [Access] 17 minutes walk from Mitaka Station North Exit



15 The most popular item among staff/ Number one product Rum Raisin Butter cream Sandwich Cookies

Lemon Drop Kichijoji Main Store
Kichijoji MAP D-3 | Lemon Bldg.1F 1-2-8 Kichijoji-honcho, Musashino-shi Phone: 0422-22-9681 Open: 10:30-22:30 Open throughout the year [Access] 2 minutes walk from Kichijoji Station North Exit



8 Make it cold or warm and enjoy different texture Musashinokuni Rice Castella sponge cake (MuBus Package) Esprit de Paris

North Mitaka MAP C-2 | Forest 1F; 3-5-12, Naka-cho, Musashino-shi Phone: 0422-54-5139 Open: 10AM-8PM Open all year around [Access] 15 minutes walk from Mitaka Station North Exit



10 Choose an illustration and complete an order T-shirt! kinshio UTme!

UNIQLO Kichijoji Store
Kichijoji MAP D-3 | 2-2-17 Kichijoji-honcho, Musashino-shi (Kichijoji Nakami-cho Dori Entrance) Phone: 0422-28-0160 Open: 10:00-21:00 Open throughout the year [Access] 2 minutes walk from Kichijoji Station North Exit



12 Custom-made with harmonica motif Harmonaca®(Hamonaka)

Kichijoji Toraya Daiyagai Alpha Store
Kichijoji MAP D-3 | 1-2-7 Kichijoji-honcho, Musashino-shi (Daiyagai Alpha Store) Phone: 0422-22-2083 Open: 9:30-19:00 Irregular holidays [Access] 2 minutes walk from Kichijoji Station North Exit



14 15 years of being loved by bread lovers Maple melon bread

Bonjour Bon Kichijoji Store
Kichijoji MAP D-3 | 1-2-7 Kichijoji-honcho, Musashino-shi Phone: 0422-22-2083 Open: 9:30-19:00 Irregular holidays [Access] 2 minutes walk from Kichijoji Station North Exit



3 Spicy and mellow Kichijoji Chile Oil with Gold Leaf

MATSUHIRO

Kichijoji MAP D-2 | Kichijoji HM Building; 1-5-16, Kichijoji-kitamachi, Musashino-shi Phone: 0422-20-5855 Open: Reservations only. ※Contact directly in advance. No regular closing. [Access] 12 minutes walk from Kichijoji Station North Exit



5 An addictive, lingering spiciness Musashisakai Chorizo Cheese Frankfurt Sausages

König Kichijoji

Kichijoji MAP D-3 | 1-17-1 Kichijoji-minamicho, Musashino-shi Phone: 0422-49-4186 Open: 10:30AM-8PM Open all year around. [Access] 7 minutes walk from Kichijoji Station Park Exit



Musashino premium certified products can be purchased here

Antenna shop mugiwara-boshi

Kichijoji MAP D-2 | 2-33-1 Kichijoji-honcho, Musashino-shi Phone: 0422-29-0331 Open: 10:30-18:30 Wednesdays [Access] 6 minutes walk from Kichijoji Station North Exit

Korokuya Musashisakai Store

Musashisakai MAP B-3 | nonowa Musashisakai EAST 2-1-35 Kyonan-cho, Musashino-shi Phone: 0422-38-5222 Open: 10:00-21:00 Weekends and Holidays 10:00-20:00 Open throughout the year [Access] Directly connected to Musashisakai Station

Farmers Markets

~Fruits and Vegetables~

Agricultural Co-operatives in the city

- JA Tokyo Musashi, Musashino Fresh Market | 1-18-10, Nishikubo, Musashino-shi Phone: 0422-54-7150 Open: 10AM-5PM Open all year around
- JA Tokyo Musashi, Sakai Branch | 2-10-18 Sakai, Musashino-shi Phone: 0422-36-3011 Open: 9AM - 3PM Closed on weekends and holidays. ※No vegetables for sale as of now.



There are many farmers market in the city where you can buy freshly picked vegetables and fruits that come straight from the farm, where the food has been nurtured with care and effort. Cabbage, radish, Japanese spinach and many more seasonal foods available.



List of Farmers Shops

Vegetables and fruits freshly picked in the morning!



Kichijoji-kitamachi

- 1 Kitamachi Sancho; 3-12, Kichijoji-kitamachi, Musashino-shi [Products] Vegetables Open: 9AM-
- 2 MuBus 29; 2-13 Kichijoji-kitamachi, Musashino-shi [Products] Vegetables Open: 10AM-
- 3 Kichijoji-kitamachi Direct Sales Depot; 2-14 Kichijoji-kitamachi, Musashino-shi [Products] Vegetables Open: 9AM-6PM
- 4 Kitamachi Yoikono Noen Farm; 3-14, Kichijoji-kitamachi, Musashino-shi [Products] Potato digging, etc. ※Reservation required
- 5 Tanaka Engei; 3-15 Kichijoji-kitamachi, Musashino-shi [Products] Vegetables Open: 10AM-
- 6 Higashi Kitaurabashi Direct Sales Depot; 3-16 Kichijoji-kitamachi, Musashino-shi [Products] Vegetables Open: 9AM-(Vegetable vending machine installed)
- 7 Yamafuku; 5-8 Kichijoji-kitamachi, Musashino-shi [Products] Vegetables Open: 10AM-Noon / 1PM-4PM
- 8 Tanaka Farm; 5-9, Kichijoji-kitamachi, Musashino-shi [Products] Vegetables Open: 9AM-5PM (Vegetable vending machine installed)
- 9 Hidamari; 5-11, Kichijoji-kitamachi, Musashino-shi [Products] Vegetables Open: 11AM

Nishikubo

- 10 Masataka Enoki Farm; 2-3-12 Nishikubo, Musashino-shi (51-1689) [Products] Vegetables Open: 10AM-5PM
- 11 Nishikubo Iguchi; 2-15, Nishikubo, Musashino-shi [Products] Vegetables, available in the afternoon
- 12 Ensho Vegetables Market; 3-11, Nishikubo, Musashino-shi [Products] Vegetables Open: 10AM-

Yahata-cho

- 13 Tanaka Produce Direct Sales Depot; 1-2, Yahata-cho, Musashino-shi [Products] Vegetables (late May to early August) Open: October-December 11:00-
- 14 Sakamoto's Vegetable Farm; 1-2, Yahata-cho, Musashino-shi [Products] Vegetables Open: 11AM-
- 15 Garden Sales Depot; 1-5, Yahata-cho, Musashino-shi (51-1447) [Products] Vegetables Open: 10AM-5PM
- 16 Jikadori Direct Sales Depot; 1-5, Yahata-cho, Musashino-shi [Products] Vegetables Open: 11AM-5PM (Vegetable vending machine installed)

Sekimae

- 17 Purple Farm Musashino; 2-1, Sekimae, Musashino-shi (52-1440) [Products] Blueberry picking from mid-July to late August Open: 9AM - Noon
- 18 Enomoto Direct Sales Depot; 2-25, Sekimae, Musashino-shi (090-3446-2154) [Products] Fruits and vegetables Open: 10AM-
- 19 K's Farm; 2-29 Sekimae, Musashino-shi [Sales items] Vegetables Open: 10:00-
- 20 Kenchan Farm; 3-12, Sekimae, Musashino-shi (52-0129) [Products] Blueberry picking from mid-July to early September
- 21 Sekimae Sancho Kurien Chestnut Farm; 3-15-13, Sekimae, Musashino-shi (54-0700) [Products] Chestnuts from September-early October Open: 10AM-
- 22 Enomoto Engei Farm, Vegetables Section; 3-41-17, Sekimae, Musashino-shi (54-4128) [Products] Flowers, vegetables, potted plants Open: 9AM-Early evening
- 23 Seasonal Vegetable Farm; 4-8, Sekimae, Musashino-shi [Products] Vegetables Open: 10AM-
- 24 YS Farm; 4-8, Sekimae, Musashino-shi (51-5212) [Products] Vegetables Open: 10AM-

- 25 Shinsakuraen Farm; 5-17-15, Sekimae, Musashino-shi (090-3134-5006) [Products] Vegetables Open: 9AM-4PM
- 26 Nagoyae Farm; 5-18, Sekimae, Musashino-shi [Products] Vegetables Open: 10AM-
- 27 Udobashi Farm; 5-19 Sekimae, Musashino-shi (52-4623) [Products] Cut flowers and vegetables Open: 9:00-17:00 (Summer Season 18:00)

Sakai

- 28 Vegetable School, Sakaimura Direct Sales Depot; 2-11 Sakai, Musashino-shi [Products] Vegetables No regular closing (Closed if rain).
- 29 Takahiro Farm, Direct Sales Depot; 4-10, Sakai, Musashino-shi [Products] Vegetables Open: After Golden Week (May) to early February Open: 10:30AM-Sunset
- 30 Kindergarten Farm, Mama's Nurturing Farm Musashisakai Platform 3; 4-11 Sakai, Musashino-shi (090-6495-2467) [Products] Organic vegetables, pickled-radish making, customized vegetables, corn picking, etc.
- 31 Tsuchiya; 5-2 Sakai, Musashino-shi [Products] Vegetables Open: 9:30AM-
- 32 Takahashi Berry Farm; 5-10 Sakai, Musashino-shi (51-4608) [Products] Blueberry picking from early July to late August

- 33 Goto Farm; 5-26 Sakai, Musashino-shi [Products] Vegetables (No regular openings)

Kyonan-cho

- 34 Funaki Vegetables Farm; 1-20 Kyonan-cho, Musashino-shi (31-1744) [Products] Vegetables Open: 10AM-5PM
- 35 Funaki Garden; 1-25 Kyonan-cho, Musashino-shi (32-1627) [Products] Young Japanese Camellia and Sasanqua Open: 9:30AM-around 5PM
- 36 Funaki Farm; 2-11 Kyonan-cho, Musashino-shi [Products] Vegetables Open: 10AM-around 5PM
- 37 Funaki Grape Garden; 2-28 Kyonan-cho, Musashino-shi (32-3570) [Products] Grape picking from 10th to late August Open: 10AM-5PM
- 38 Aji no Kodawari, Vegetables Direct Sales Depot; 4-11 Kyonan-cho, Musashino-shi (32-4213) [Products] Vegetables Open: 10AM-Noon
- 39 Yoshino Farm, Direct Sales Depot; 4-11 Kyonan-cho, Musashino-shi (31-0010) [Products] Vegetables, cut flowers and persimmons and kiwi fruits Open: 10AM-

※ Products may vary depending on time and season. Close when sold-out.

I've been selling farm-fresh products for 30 years now and we're probably the first one to start. We always have more than 20 kinds of products available. Some of our customers like gardening and we often have fun conversations on how to grow vegetables. Please come and try our vegetables too!



Navigator

- 10 Masataka Enomoto Farm Mr. Masataka Enomoto

Events

There are many fun events being held in the city every month, ranging from traditional Japanese matsuri to unique festivals. Why not check some out!

1
January



Musashino's Seven Gods of Good Fortune Tour

Kichijoji North Mitaka Musashisakai

3
March

Musashino city Road Race

North Mitaka

5
May



Kichijoji Music Festival, the city filled with music

Kichijoji Welcome Campaign Spring Festa

(Kichijoji Music Festival-Daikishshou Lottery) Kichijoji

Kichijoji Aloha Festival Kichijoji

Children's sumo wrestling



2
February



Kizuki Taisha Shrine "Setsubun Festival (bringing good luck)" Musashisakai

Musashino Hachimangu Shrine "Setsubun Tsuina Ceremony" Kichijoji

Musashisakai JAZZ SESSION Musashisakai

4
April



Musashino Cherry Blossom Festival North Mitaka

Kichijoji Flower Festival (Gessoji Temple) Kichijoji

Kichijoji Collection (fashion show) North Mitaka

6
June



Growing chilli pepper together Musashisakai

7
July

Bon Odori Festival North Mitaka

Kichijoji Fureai Summer Festival Kichijoji

Kichijoji South Exit Fureai

Summer Festival Kichijoji



A fun, local summer festival

8
August

Hachiman Festival with many stalls, Japanese drums and fireworks



Sun Road Gessoji Summer Festival Kichijoji

Sakai Minami Bon Odori Festival Musashisakai

Sekimae Hachiman Festival North Mitaka

Sakai Night Market Musashisakai

10
October



Enjoy the Musashino culture

Kichijoji Noh Theater Performance (Gessoji Temple) Kichijoji

Chili Pepper Harvest Festival Musashisakai

12
December

Kichijoji Photo Rogaining Kichijoji

Kichijoji Scandinavian WALK Kichijoji

9
September



Manga and anime lovers gather around! Anime Wonderland

Model Airplane Festival North Mitaka

Kichijoji Autumn Festival Kichijoji

Musashino city Treasure Hunting

Kichijoji North Mitaka Musashisakai

Kichijoji Welcome Campaign

"Kichijoji Anime Wonderland"

11
November



November is filled with events!

Musashino Banquet Festa Kichijoji North Mitaka Musashisakai

Musashino Illuminations

—Kichijoji Station, Mitaka Station and

Musashisakai Station— Kichijoji North Mitaka Musashisakai

Musashino Hachimangu Shrine

Otori Festival Kichijoji

Musashisakai Performers' Festival Musashisakai

Musashino Environment Festival North Mitaka

Musashino Outdoor Market North Mitaka

Musashino city Agricultural Festival North Mitaka

Musashino International

Networking Festival Musashisakai

Pick UP!



9 Eleven mikoshi will parade through the city!
Kichijoji Autumn Festival

A historical autumn festival held in mid-September every year. Total of eleven mikoshi including the miya-mikoshi from Musashino Hachimangu Shrine and ten others from local shrines will powerfully parade through the city! There is also a performance of "Musashino Bayashi", city's intangible folk culture asset, as well as the lively chants which definitely adds to the fun. It is held for two days.

↑ Enjoy the colors of each Mikoshi. "Musashino Bayashi" will get the festival going.

Chonai mikoshi (portable shrine for the town)

SunRoad Mikoshi/Heiwa Dori Mikoshi/Daiya Gai Mikoshi/Jonai Mikoshi/Taisho Fest. Mikoshi/Inokasajira Dori Mikoshi/Kichinan Fest. Mikoshi/Itsukaichi Dori Friendship Mikoshi/Inari Mikoshi/Nakamichi Fest. Mikoshi

Kichijoji MAP D-2 | [Venue] Musashino Hachimangu Shrine, and around Kichijoji Station [Host] Kichijoji Autumn Festival Committee [Contact] Musashino city urban tourism corp. Phone: 0422-23-5900

There are many parks and designated cultural property just outside of downtown Musashino. Going to those places by bus and then walking your way back might help save a little time. A number of buses such as Kanto Bus, Odakyu, Seibu Bus as well as the local community bus "MuBus" are available.

Stops and Destinations

As of August 2019



Kanto Bus



Odakyu Bus



Seibu Bus

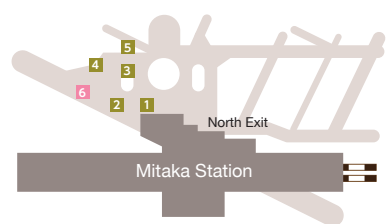
Kichijoji Station

Bus stop	Route	Destination	Via	Bus Company		
North Exit	1	Kichi 73	Mukodaicho 5-chome	Seikei Gakuen mae/Musashino Daigaku	Kanto Bus	
	2	Kichi 53	Yagisawa Sta.	Seikei Gakuen mae / Musashino Jutaku	Kanto Bus	
	3	Nishi 10	Nishi Ogikubo Sta.	Tokyo Joshi Dai mae	Kanto Bus	
	4	Wan 01	Daiba(Oeedo-Onsen Monogatari)	Takaicho Sta.	Kanto Bus	
	10	Airport	Haneda Airport/Narita International Airport	Joint operation—Odakyu/Kanto/Airport Transport Service/Keiyou/Keisei		
	0	Mubus	Kichijoji East Route/Kichijoji Northwest Route/Mitaka-Kichijoji Route	Musashiseki Sta. iriguchi/Oizumigakuen Sta.	Seibu Bus	
	South Exit	2	Kichi 02	Chitosekarasuyama Sta. Kitaguchi	Shinkawa—Shimohonjuku	Odakyu Bus
		4	Kichi 06	Chofu Sta. Kitaguchi	Jindaiji Shokubutsukoen mae	Odakyu Bus



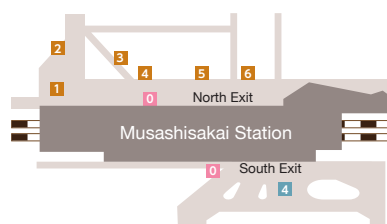
Mitaka Station

Bus stop	Route	Destination	Via	Bus Company	
North Exit	1	Taka 01-02-03	Kitaura/Musashiseki Sta./Tanashi Hashiba	Shimin Bunka Kaikan iriguchi/Musashino Shiyakusho	Kanto Bus
	2	Taka13	Yagisawa Sta.	Shimin Bunka Kaikan iriguchi/Musashino Jutaku	Kanto Bus
	3	Taka 30-33	Musashisakai Sta./Musashi Koganei Sta.	Shimin Bunka Kaikan iriguchi/Musashino Daigaku	Kanto Bus
	4	Taka40	NTT Musashino Research and Development Center	Direct Route / Musashino Shiyakusho / Musashino Jutaku (Note varying operation time tables)	Kanto Bus
	5	Taka 21-22	Tenjinryama/Hibarigaoka Sta.	Hoya Sta. Minamiguchi/Tanashicho 2-chome/Sumiju-mae	Kanto / Seibu
	6	Mubus	Mitaka Station Northwest route / Mitaka-Kichijoji route	Sakai-Mitaka route	Kanto Bus / Odakyu Bus



Musashisakai Station

Bus stop	Route	Destination	Via	Bus Company		
North Exit	1	Sakai03	Hibarigaoka Sta.	Tanashi Sta. · Yato	Seibu Bus	
	2	Sakai04	Hibarigaoka Sta.	Midoricho 2-chome Hibarigaoka Danchi		
	3	Taka30	Mitaka Sta.	Musashino Daigaku	Kanto Bus	
	4	Sakai16	Hanakoganei Sta. Minamiguchi	Musashi Koko / Koganei Koen Higashiguchi	Kanto Bus	
	5	Sakai12	Mukodaicho 5-chome	Musashino Daigaku/Gochu mae	Kanto Bus	
	6	Sakai17	Vi. GARDEN Nishi Tokyo	Musashi Koko/Sakaibashi	Kanto Bus	
	0	Mubus	Danchi Josuibata	Sakurazutsumi Danchi iriguchi	Odakyu Bus	
	South Exit	4	Kichi 01	Kichijoji Sta.	Sakai West Route/Sakai-Higashi Koganei Line/Sakai-Mitaka Route	Odakyu Bus
		0	Mubus	Kyonan West Route/Kyonan East Route/ Kyonan West Route (Stops at Musashino Eigyocho)		



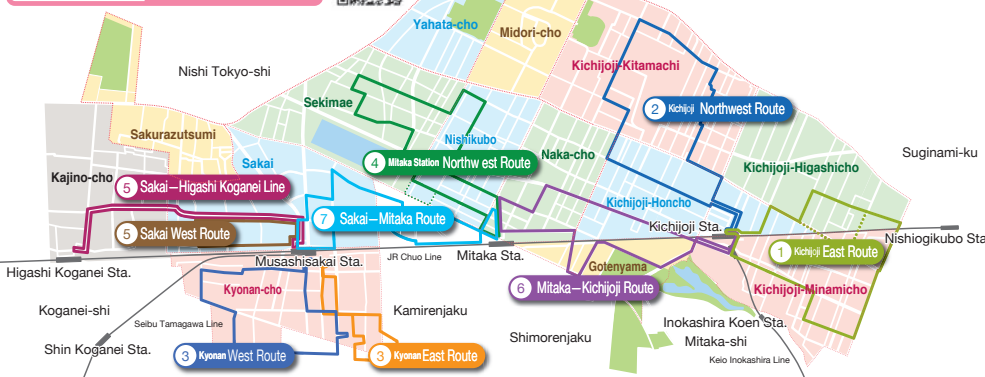
What is MuBus?

MuBus is a local community bus mainly running through areas around Kichijoji Station, Mitaka Station North Exit and Musashisakai Station. It offers seven different routes. The name MuBus came from rhyming with "MOVE US" and also taking the "Mu" from Musashino. It's a small bus, 7 meters tall and 2 meters wide, which fits 29 people. It has been running since 1995 and it is 100 yen a ride.



A friendly local transportation service, "Community bus".

-BUS Community Bus MuBus Route Map



Column | A pop, illustrated Kanto Bus

Out of all 400 vehicles from Kanto bus, there is one that is different. It's a bus specially featured by an illustrator Shiotani Kin who lives in Musashino city. The theme is "city and nature combined", so on one side of the bus you will see the modern view of Kichijoji and on the other side you will see the nature aspect of the city such as Inokashira Park. It will definitely be a rare experience if you can spot it!



Mainly seen around Kichijoji Station and Mitaka Station, with an occasional visit to Musashisakai Station.

There are different ways to enjoy Musashino city whether to see the culture, history or nature. Here are three different examples, with specific distance and time required, of how you can use your day. They are all doable in just half a day and great for some nice relaxing walk.

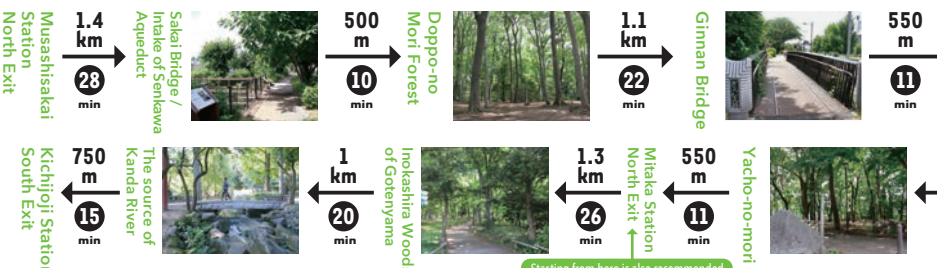
1 Musashino-Kichijoji Seven Gods of Fortune Route

[Total Distance] About 9km [Time for walking] About 3 hours (It does not include the time of your stay at each destination)



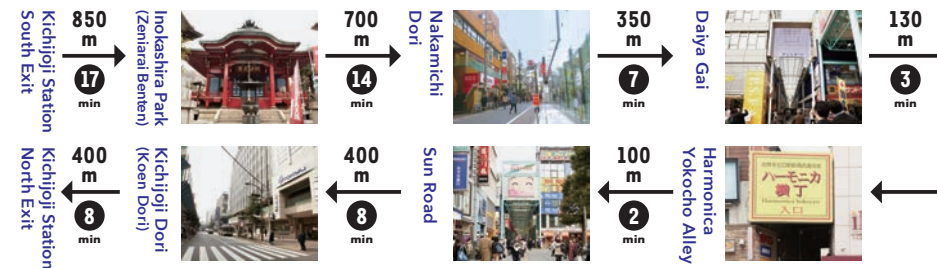
2 Nature route with water and greens

[Total Distance] About 7km [Time for walking] About 2 hours (It does not include the time of your stay at each destination)



3 Stroll route through Inokashira Park and Kichijoji

[Total Distance] About 3km [Time for walking] About 1 hour (It does not include the time of your stay at each destination)



Available Services

Car Rentals

- NISSAN Rent a Car, Mitaka Station Store
1-23-17 Naka-cho, Musashino-shi Phone: 0422-37-2323
- NIPPON Rent a Car, Kichijoji Store
2-2-6 Kichijoji-minamicho, Musashino-shi
Phone: 0422-49-3900
- TOYOTA Rent a Car, Musashisakai Store
1-10-10 Sakai, Musashino-shi Phone: 0422-55-0100
- TOYOTA Rent a Car, Kichijoji Station Store
2-4-15 Kichijoji-minamicho, Musashino-shi
Phone: 0422-76-8100
- NICONICO Rent a Car, Kichijoji-minami Store
3-5-3 Kichijoji-minamicho, Musashino-shi (ENEOS
Gasoline Stand) Phone: 0422-45-6400
- ORIX Rent a Car, Kichijoji Station Store
1-6-7 Kichijoji-minamicho, Musashino-shi
Phone: 0422-24-6381

Bicycle Rentals

- Kichijoji Odorihigashi Bicycle Parking
1-18-13 Kichijoji-honcho, Musashino-shi Phone: 0422-20-3325
[Cost] Temporary Use: 200 yen (One use is limited to under 24 hours)
※ Picture ID such as a drivers license is required for registration.
- [Available Hours] Weekday: 6:30AM-8PM /
Sundays and holidays: 10AM - 8PM
※ You can only rent or return within the hours above.
- [Payment] Cash only
- Suicle, Musashisakai Station
※ Requires registration online. No registration required for visitors.
2 Kyonan-cho, Musashino-shi Phone: 0120-386-306
- [Must Have] Suica (PASMO or Mobile Suica also okay) +
a smartphone able to receive text messages (SMS).
- [Cost] Temporary Use: 100 yen per hour / For Visitors: 500 yen a day
- [Available Hours] 24 hours, all year around
※ You can return the bicycle at any of the 4 ports
(Higashi-Koganei Station, Musashisakai Station,
Musashi-Koganei Station, Kunitachi Station)
- [Payment] Cash, Suica, Mobile Suica, PASMO or credit card
※ For credit card requires online registration.

Coin Lockers

Refer to  icon in the city map
(beginning of this guidebook)

- 1 near Musashisakai Station North Exit direction
- 2 inside Mitaka Station gates ● 2 around Mitaka Station
- 3 near Kichijoji Station exits ● 4 around Kichijoji Station

Currency Exchange

- World Currency Shop
· Kichijoji Branch inside atré Kichijoji East bldg. 2F; 1-1-24,
Kichijoji-minamicho, Musashino-shi Phone: 0422-22-2259
Open: 10AM-8PM
- Kichijoji North Exit Branch, MUFG Bank inside the basement
of Daiya Barore Bldg.; 1-15-2 Kichijoji-honcho,
Musashino-shi Phone: 0422-23-8266 Open: 9AM-5PM

It's important to collect enough information before you go around the city. There are services available such as coin lockers where you can store your luggages as well as car and bicycle rentals. Musashino city also offers stroller rentals to support those with children.

Stroll Rentals

The city offers a free stroll rental service for you to be able to walk and shop around Kichijoji station with children.
[Rental Spots]

- Information Desk at Kirarina Keio Kichijoji 2F
- Information Desk at coppice KICHUJOJI, Bldg. B, 1F
- Tourist Information Center at atré Kichijoji, Main Bldg. 1F
- Information Desk at Kichijoji PARCO 1F
- Kichijoji Parking Plaza (Public Bicycle Parking)

[Available Hours] 10AM-6PM [Cost] Free

[Area of Use] Around Kichijoji Station

※ You will need to provide your contact information to use the service.

※ No reservations accepted.

※ Return to the same place of rental.



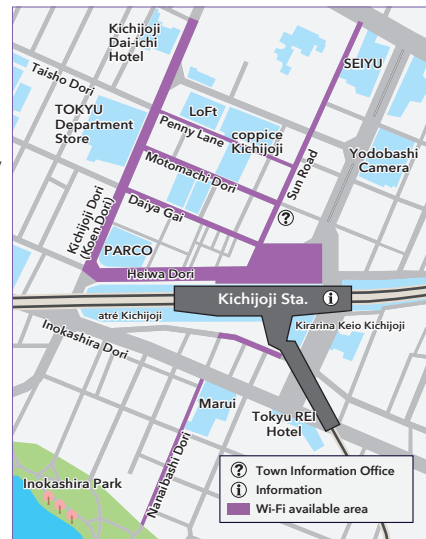
Free Wi-Fi

There is public Wi-Fi provided in the main parts of Kichijoji for free.

Read QR code on how to connect to Kichijoji Free Wi-Fi

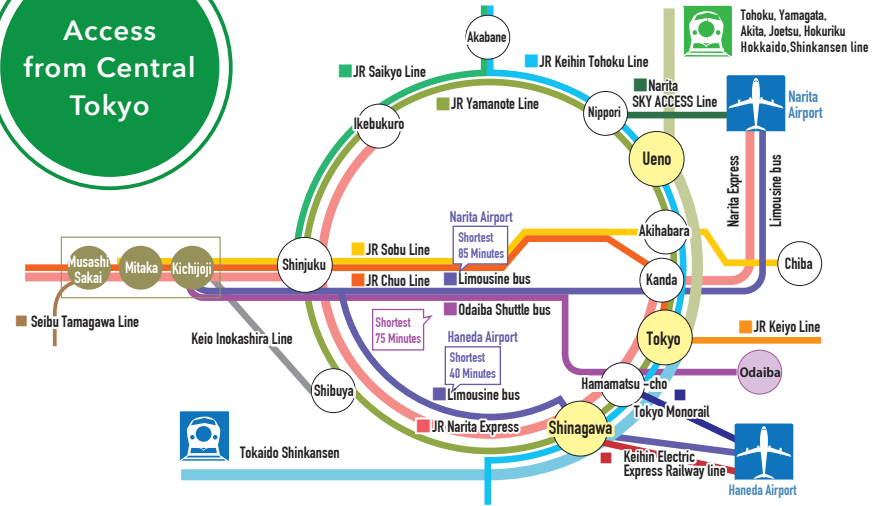


SSID:#KichijoiFree



There is also free Wi-Fi available inside Mitaka Station and other shops that offer the service.

Access from Central Tokyo



JR Musashisakai Sta.

35 minutes from Tokyo Station, 22 minutes from Shinjuku Station

JR Mitaka Sta.

31 minutes from Tokyo Station, 18 minutes from Shinjuku Station

JR Kichijoji Sta.

29 minutes from Tokyo Station, 17 minutes from Shinjuku Station, 19 minutes from Shibuya Station Keio Inokashira Line

※ The ride time using the Chuo Line Rapid Service.



Musashino city Visitor's Guide (English) | Kichijoji | Mitaka North Area | Musashisakai |

Published | October 2019
 Publisher | Musashino city urban tourism corp.
 Musashino commerce and Industry Bulling 1F;
 1-10-7 Kichijoji-honcho, Musashino-shi
 Phone: 0422-23-5900
 Open: 9AM-6PM Open all year around
 (Except New Years season).
 kanko_office@musashino-kanko.com
 Website: http://musashino-kanko.com/
 Printed by | BUN-SHIN Co., Ltd.

Planned and Edited by
 | Map Project Committee, Bunshin-Publishing
 Written by | Haruna Murabe
 Designed by | Daiki Akema (officence)
 Illustration by | Chiemi Inaba, Aya Ogaki (officence)
 Photos by | Akira Hasegawa
 Edits Assisted by
 | Next Local Co., Ltd.

※ The prices listed are as of August 2019.



GREEN PRINTING JPN
P-D10010